

FOR LEASE: ±1,890 SF 2nd GEN SALON SPACE

727 Walnut St, Philadelphia, PA 19106

EQUITY RETAIL BROKERS

709K

Visits in last 12 months*

Source:

**Placer.ai**

*Based on activity within 250 ft of property

**PROPERTY FEATURES & DETAILS**

- High-visibility location in the heart of Philadelphia's Washington Square West
- Ideal for restaurant, bar, boutique retail, or experiential use
- Heavy daytime and evening foot traffic from surrounding offices, hotels, and attractions
- Surrounded by popular venues including Talula's Garden, Fat Salmon, Morimoto, Buddakan, and The Forrest Theatre
- Close proximity to Jefferson Hospital, the Curtis Center, and multiple luxury residential buildings

**LOCATION DETAILS**

- Dense mix of hospitality, residential, and institutional traffic
- A go-to destination for both fine dining and casual eateries
- Proximity to cultural institutions and theaters adds strong evening and weekend activity
- Accessible via SEPTA lines, PATCO, and major city thoroughfares

**Walk Score****99****Transit Score****100****Bike Score****83****CONTACT****WILL CICCARELLI**

wcicarelli@equityretailbrokers.com

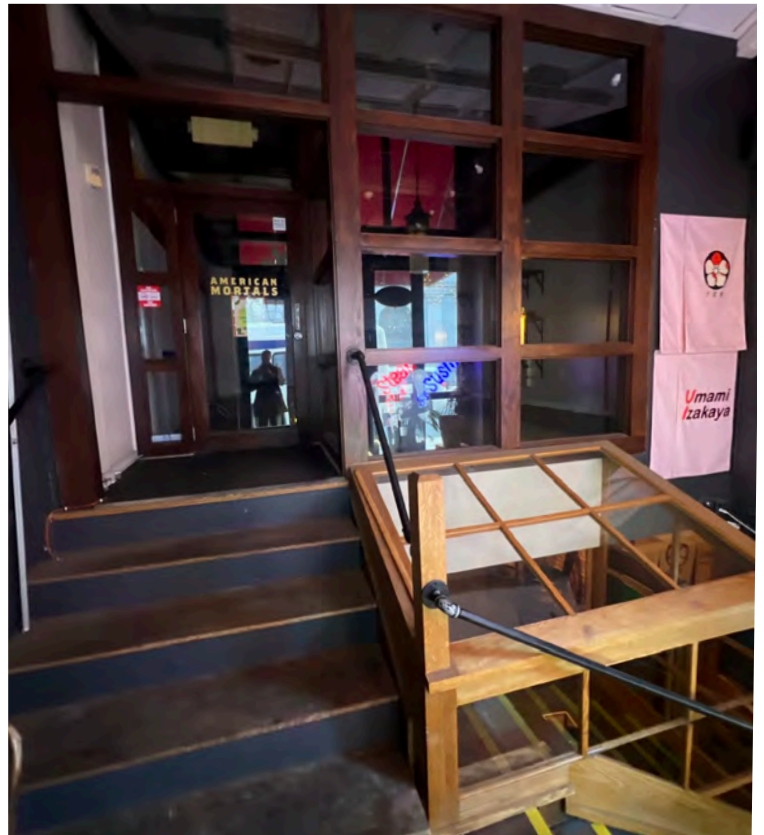
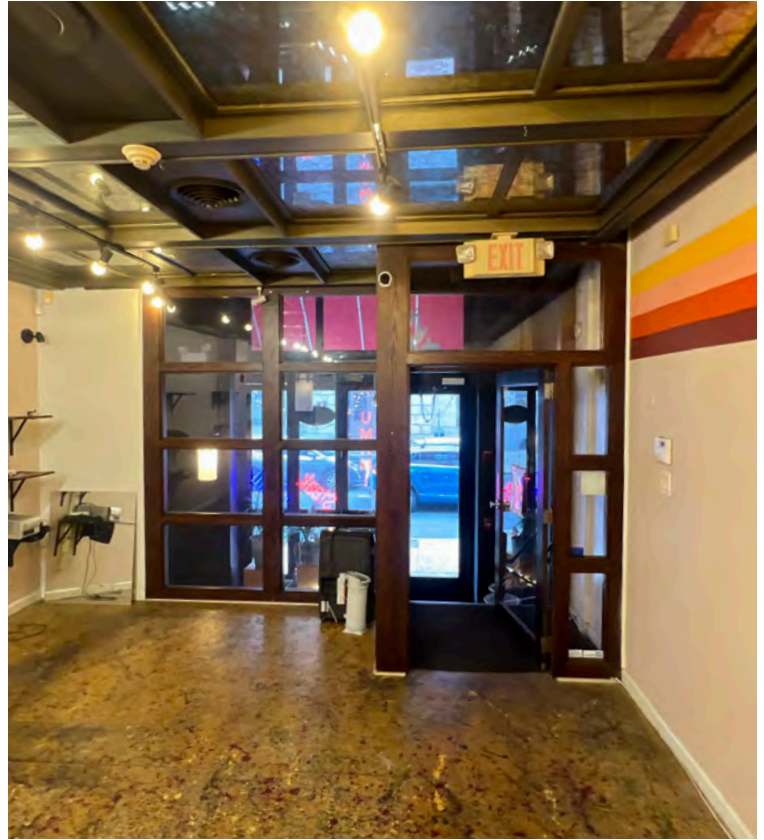
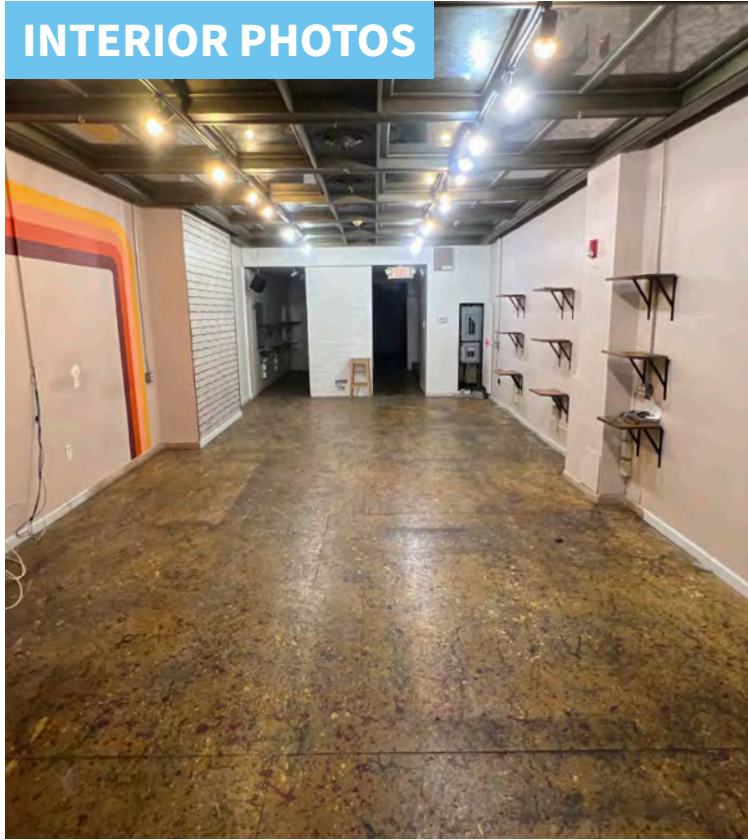
DIRECT 484.531.2209

FOR LEASE: ±1,890 SF 2nd GEN SALON SPACE

727 Walnut St, Philadelphia, PA 19106

EQUITY RETAIL BROKERS

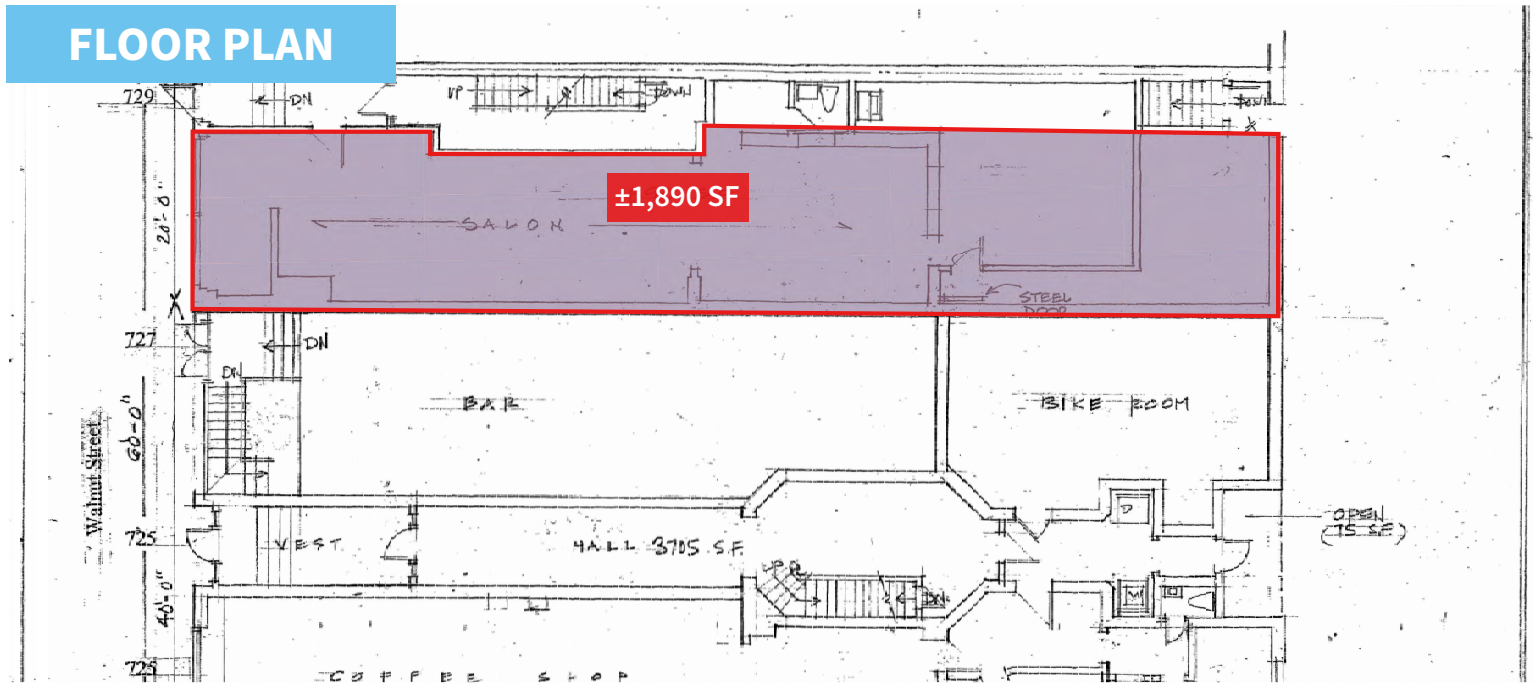
INTERIOR PHOTOS



FOR LEASE: ±1,890 SF 2nd GEN SALON SPACE

727 Walnut St, Philadelphia, PA 19106

EQUITY RETAIL BROKERS

FLOOR PLAN**Demographic Overview (0.25, 0.5, 1-mile radius)****The right space. The right move.****CMRE** CAPITAL MARKETS
REAL ESTATE NETWORK

Information concerning this offering is from sources deemed reliable but no warranty is made to the accuracy thereof and it is submitted subject to errors, omissions, changes of price or other conditions, prior to sale or lease or withdrawal without notice. Equity Retail Brokers is licensed in PA, NJ, & DE. Will Ciccarelli is a licensed salesperson in PA.

04/25

MARKET AERIAL

727 Walnut St | Philadelphia, PA

