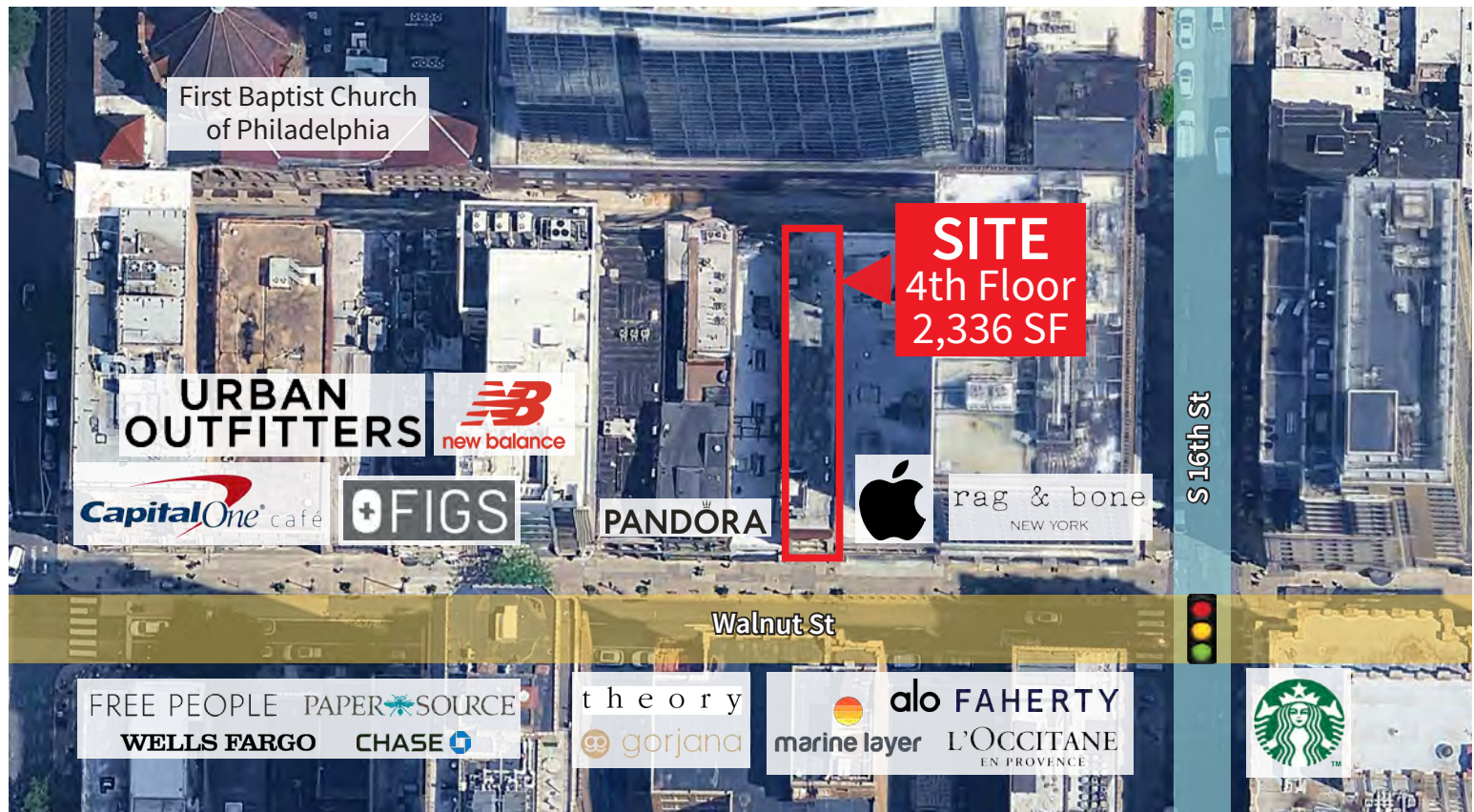
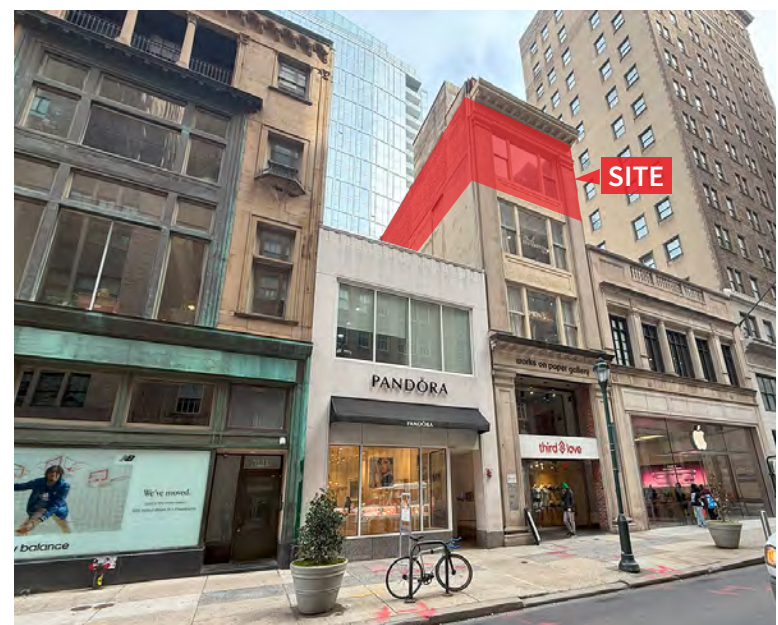


FOR LEASE: 2,336 SF, 4th FLOOR
1611 Walnut St, Philadelphia, PA 19103



PROPERTY FEATURES & DETAILS

- For Lease: Entire fourth floor
- Former Yoga Studio
- Ideal for any fitness or office Tenant
- Property located in the Heart of the Rittenhouse shopping district
- Dense foot traffic around the clock
- Area tenants include Apple, Alo Yoga, New Balance, Madewell, LuluLemon, Vouri, Rag & Bone, Faherty, Gorjana, Figs, Free People
- Approx 102,839 people in 1-mile radius



CONTACT

CONOR TUNNO

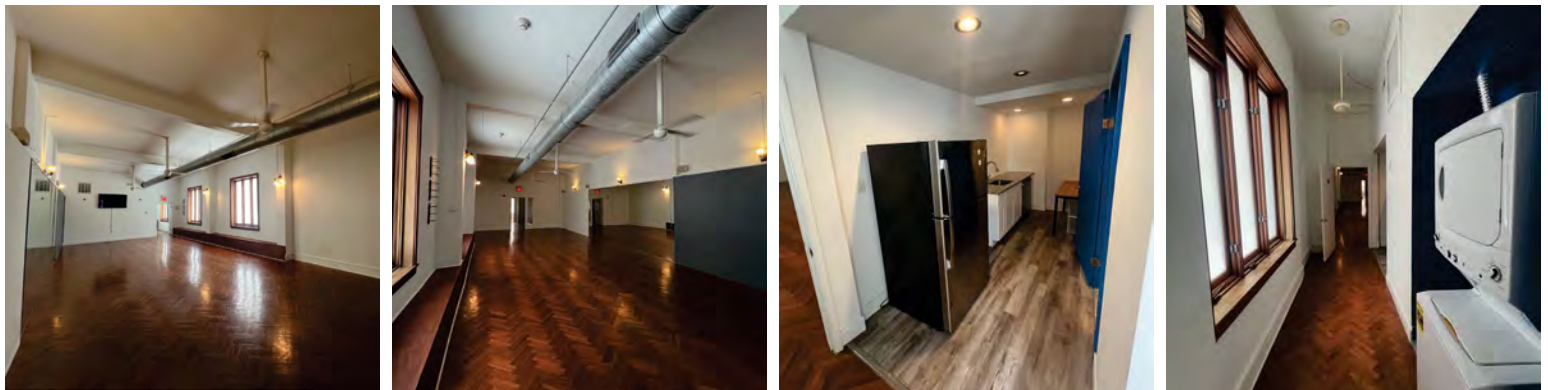
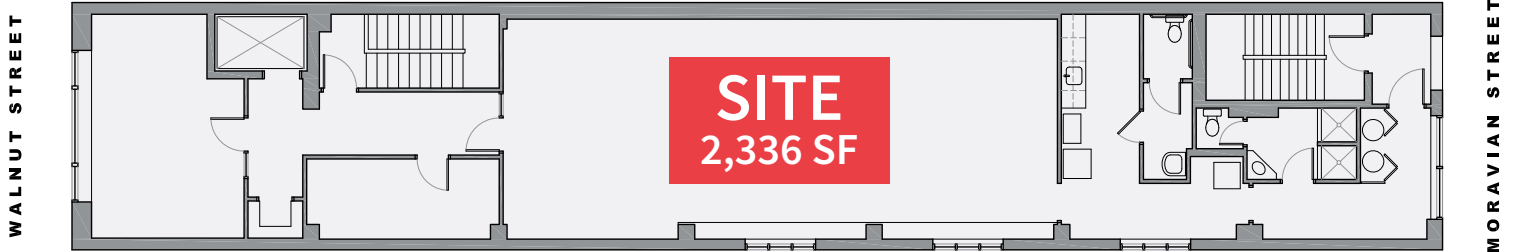
ctunno@equityretailbrokers.com

CELL 484.796.1201

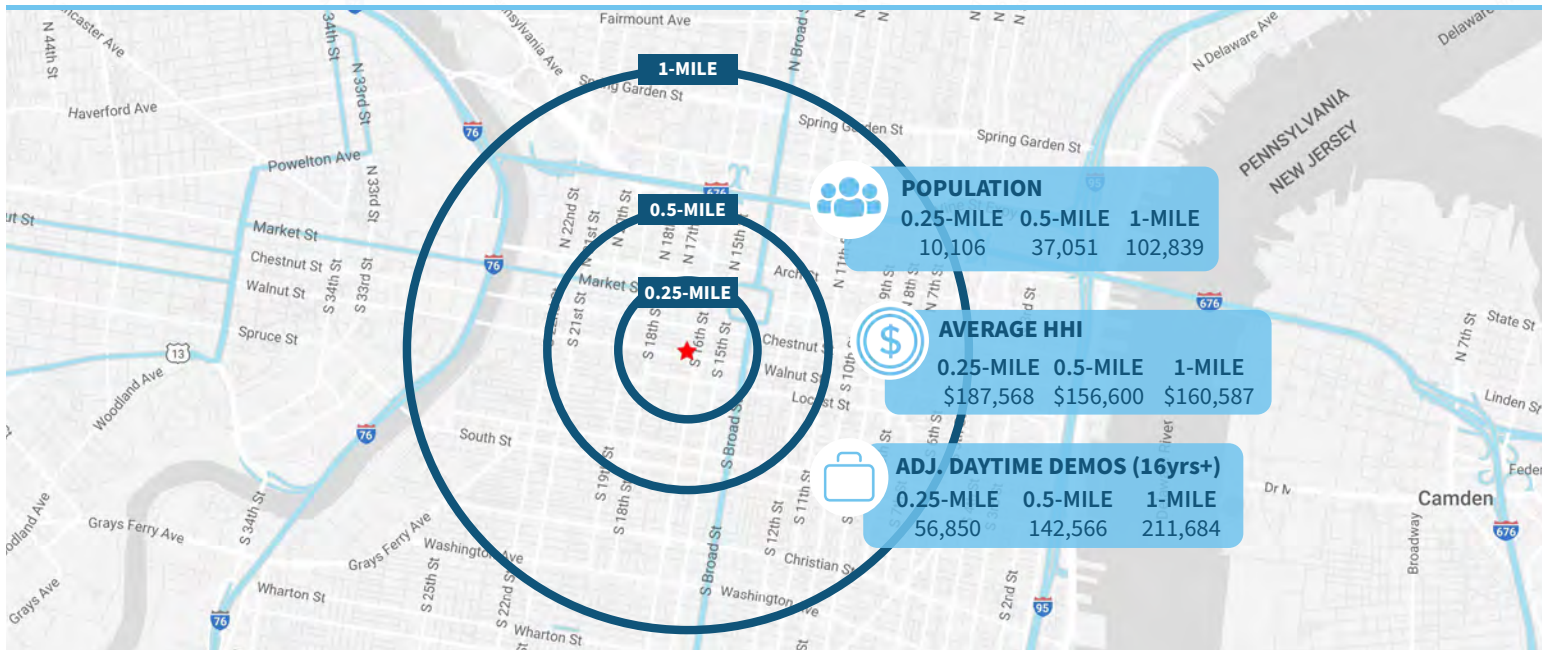
FOR LEASE: 2,336 SF, 4th FLOOR
 1611 Walnut St, Philadelphia, PA 19103

EQUITY RETAIL BROKERS

SITE PLAN



Demographic Overview (0.25, 0.5, 1-mile radius)



The right space. The right move.



Information concerning this offering is from sources deemed reliable but no warranty is made to the accuracy thereof and it is submitted subject to errors, omissions, changes of price or other conditions, prior to sale or lease or withdrawal without notice. Equity Retail Brokers is licensed in PA, NJ, & DE. Conor Tuno & Steve Jeffries are licensed salespersons in PA.

03/25

MARKET AERIAL

1611 Market Street, Philadelphia | Philadelphia County, PA



Aerial Source: Google Earth Pro & Traffic Count Source: Placerati (23)