

FOR LEASE: ±3,300 SF OF GROUND FLOOR RETAIL SPACE

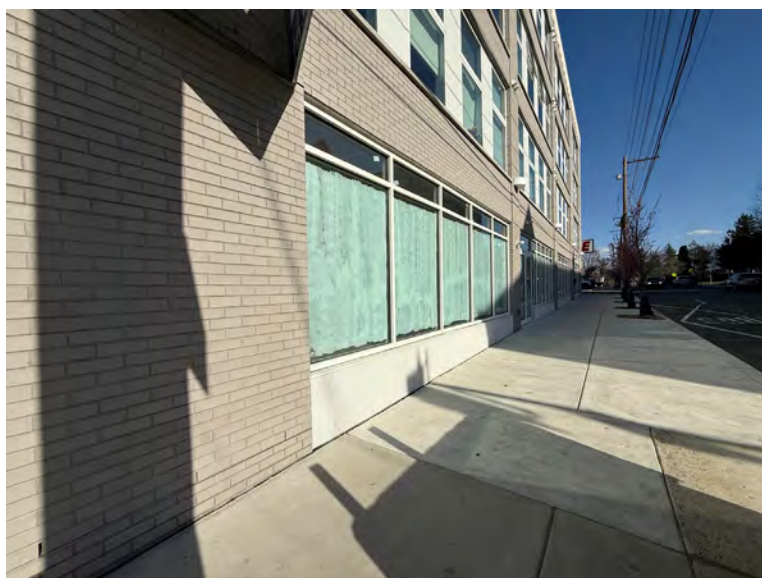
5959 Ridge Ave, Philadelphia, PA 19128

EQUITY RETAIL BROKERS



PROPERTY FEATURES & DETAILS

- New construction retail/office
- 1,000 SF – 3,150 SF (can demise)
- Ideal for boutique retailers and/or creative office users
- In the heart of Roxborough, Philadelphia
- 30 residential units above
- CMX-2.5 zoning



CONTACT

NATHAN RHODES

nrhodes@equityretailbrokers.com

DIRECT 484.531.2076

STEVE JEFFRIES

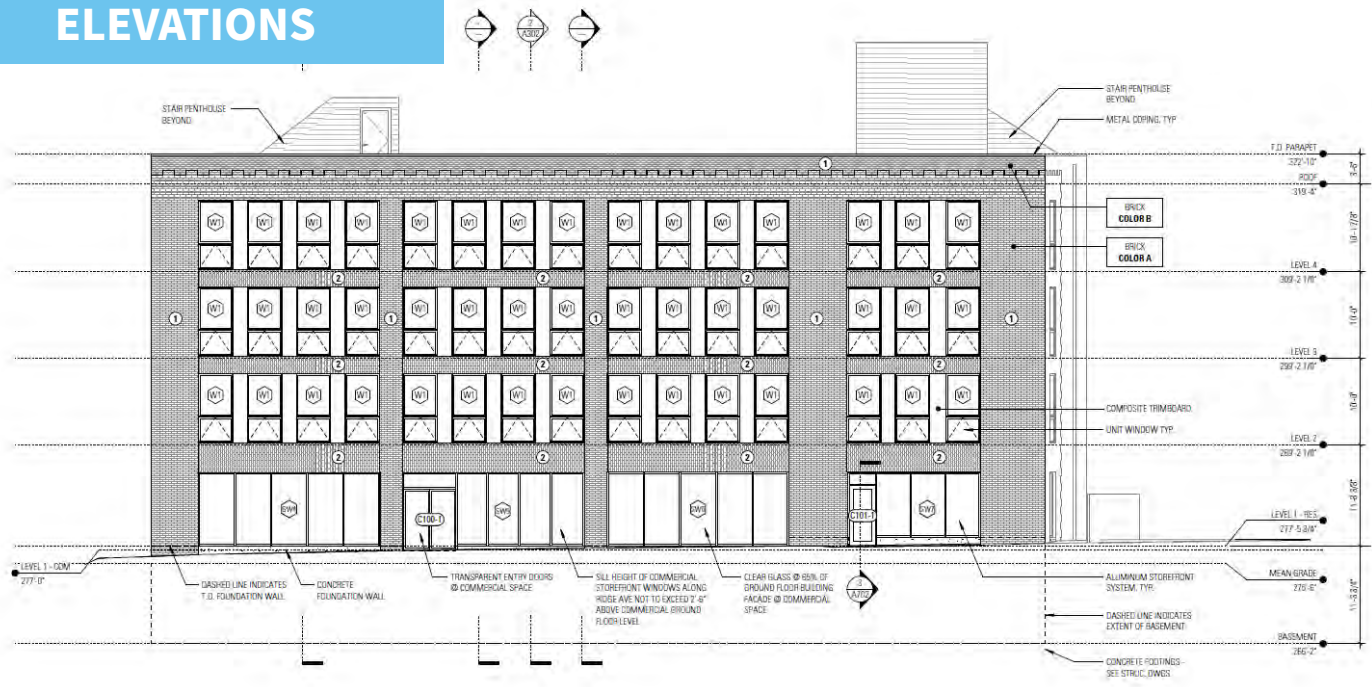
sjeffries@equityretailbrokers.com

DIRECT 484.531.2250

FOR LEASE: ±3,300 SF OF GROUND FLOOR RETAIL SPACE

5959 Ridge Ave, Philadelphia, PA 19128

ELEVATIONS



2 SOUTHWEST ELEVATION - RIDGE AVE.
1/8" = 1'-0"

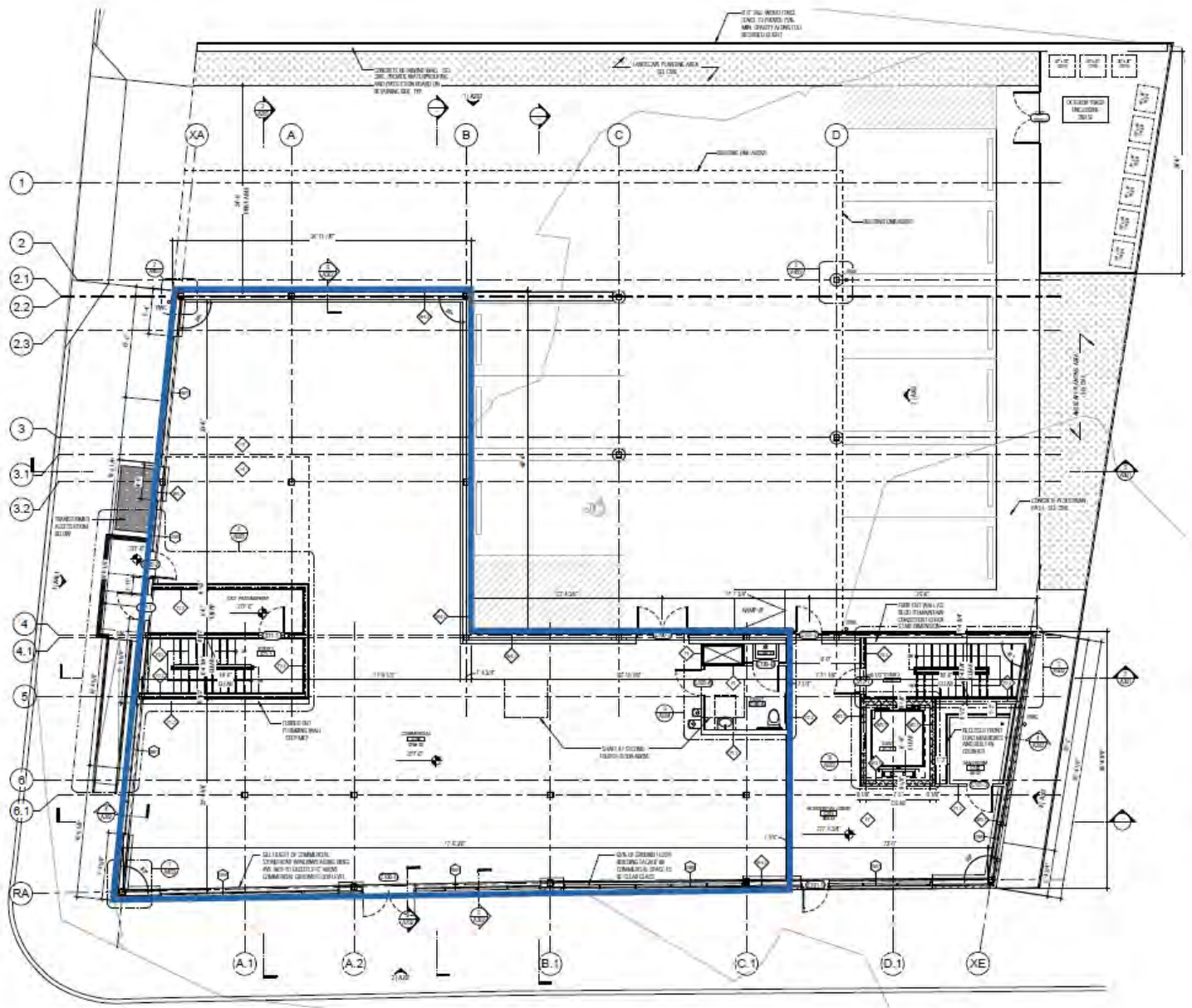


1 NORTHWEST ELEVATION - MONASTERY AVE.
1/8" = 1'-0"

FOR LEASE: ±3,300 SF OF GROUND FLOOR RETAIL SPACE

5959 Ridge Ave, Philadelphia, PA 19128

FLOOR PLAN



FOR LEASE: ±3,300 SF OF GROUND FLOOR RETAIL SPACE

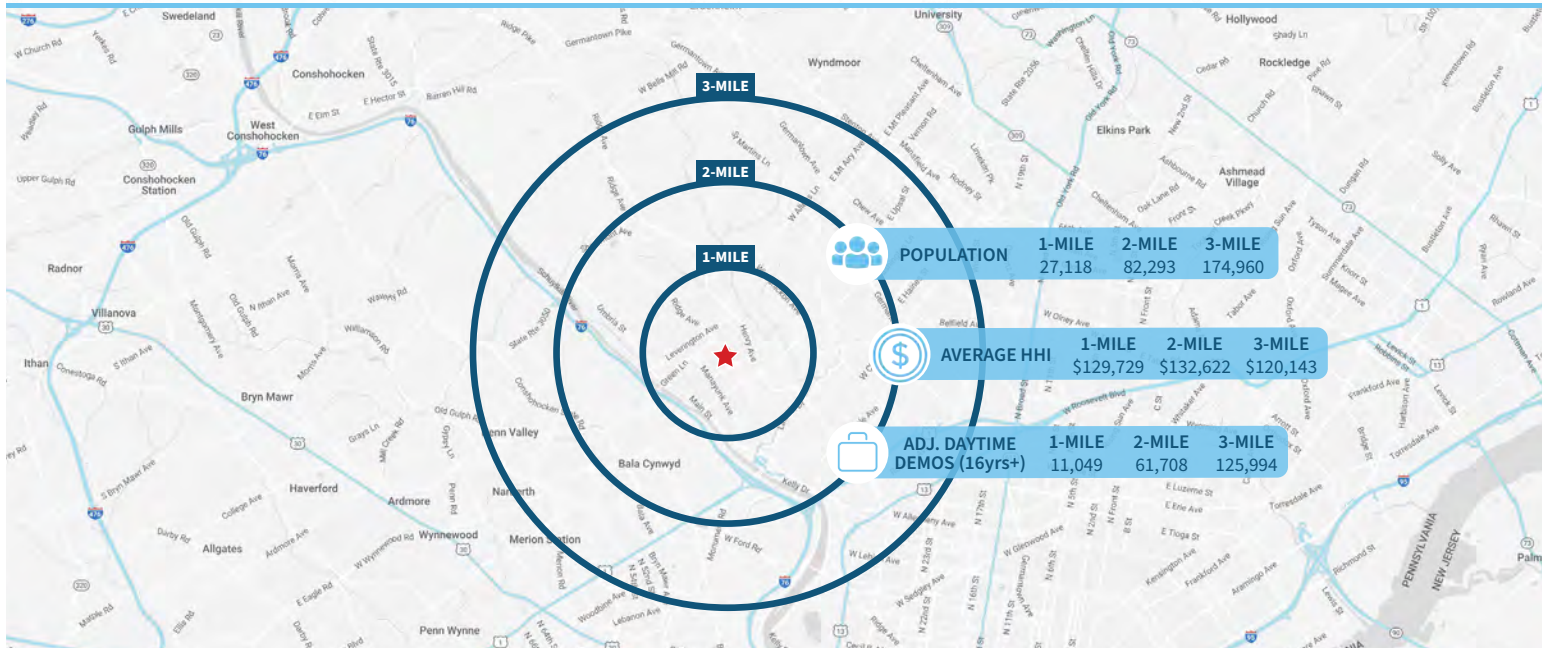
5959 Ridge Ave, Philadelphia, PA 19128

EQUITY RETAIL BROKERS

INTERIOR SPACES



Demographic Overview (1, 2, 3-mile radius)



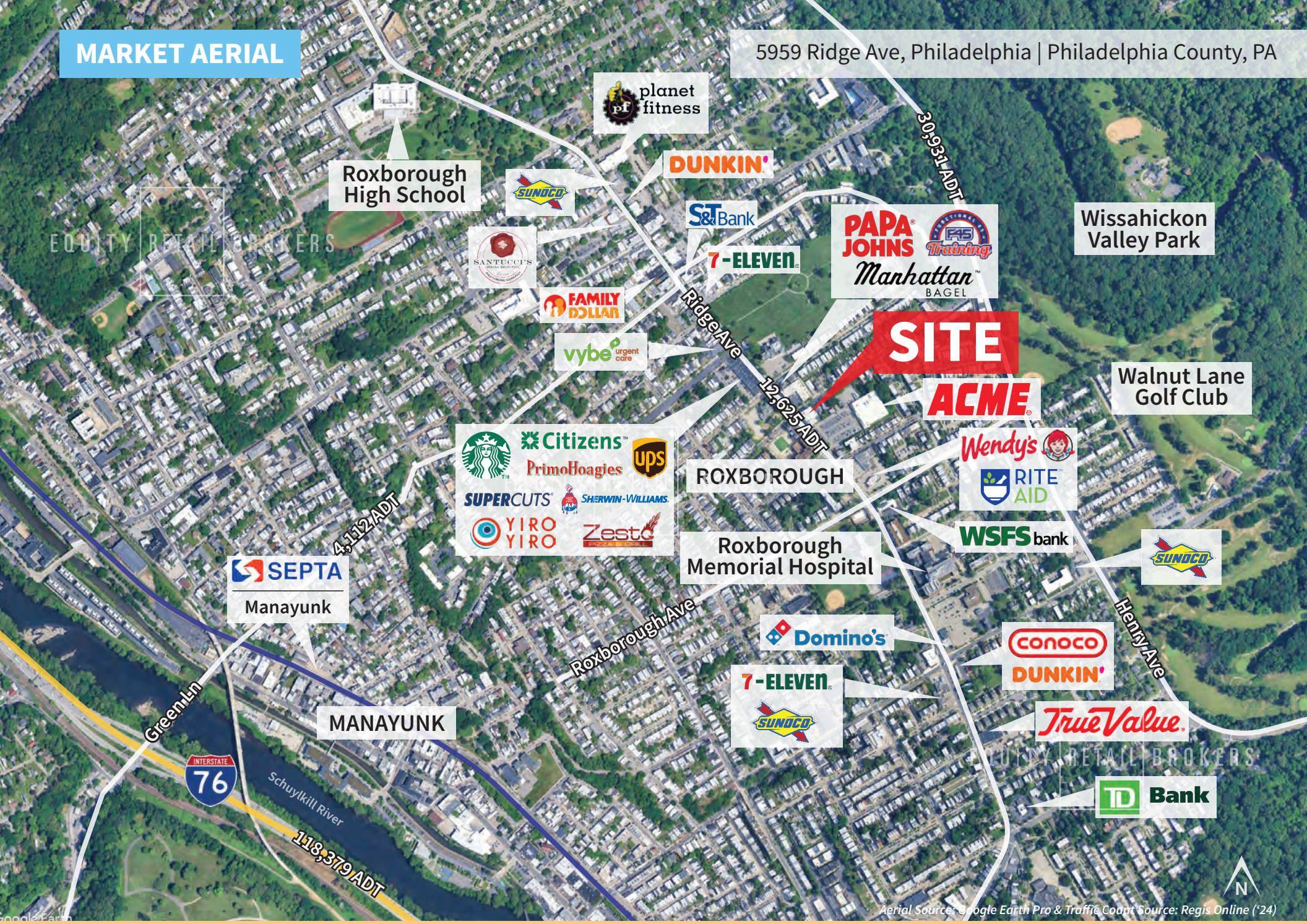
The right space. The right move.



Information concerning this offering is from sources deemed reliable but no warranty is made to the accuracy thereof and it is submitted subject to errors, omissions, changes of price or other conditions, prior to sale or lease or withdrawal without notice. Equity Retail Brokers is licensed in PA, NJ, & DE. Nathan Rhodes & Steve Jeffries are licensed salespersons in PA.

MARKET AERIAL

5959 Ridge Ave, Philadelphia | Philadelphia County, PA



Aerial Source: Google Earth Pro & Traffic Count Source: Regis Online ('24)

Compliments of:

Equity Retail Brokers ■ 531 W. Germantown Pike, Ste 103 ■ Plymouth Meeting, PA 19462 ■ 610.645.7700 ■ www.equityretailbrokers.com

03/25

EQUITY RETAIL BROKERS

