

FOR LEASE: 3 RETAIL SPACES | 1,000 - 3,600 SF

339 N. Broad St, Philadelphia, PA 19107

EQUITY RETAIL BROKERS



PROPERTY FEATURES & DETAILS

- 3 retail spaces available on the exploding North Broad corridor
- **Space A:** ±1,100 SF — 30' of frontage on N Broad St, ceiling height 15 ft
- **Space B:** ±1,220 SF — 2nd generation salon space with high end finishes
- **Space C:** ±3,600 SF + — potential for outdoor seating. Ground floor second generation restaurant space with full fit-out bar & kitchen. 2 existing hood systems in place (Hood A: 15'4 & Hood B: 8'11)
- Excellent visibility and ample frontage on N Broad St

LOCATION DETAILS

- Steps from the new Philadelphia Police Department and School District of Philadelphia buildings
- Located beneath 339 luxury apartments
- Located in the emerging tri-party neighborhood (N. Broad/Loft District/Francisville) in need of retail amenities to fulfill high demand from residential densities

CONTACT

NATHAN RHODES

nrhodes@equityretailbrokers.com

DIRECT 484.531.2076

STEVE JEFFRIES

sjeffries@equityretailbrokers.com

DIRECT 484.531.2250

FOR LEASE: 3 RETAIL SPACES | 1,000 - 3,600 SF
 339 N. Broad St, Philadelphia, PA 19107

EQUITY RETAIL BROKERS



Demographic Overview (1, 3, 5-mile radius)



The right space. The right move.



Information concerning this offering is from sources deemed reliable but no warranty is made to the accuracy thereof and it is submitted subject to errors, omissions, changes of price or other conditions, prior to sale or lease or withdrawal without notice. Equity Retail Brokers is licensed in PA, NJ, & DE. Nathan Rhodes & Steve Jeffries are licensed salespersons in PA.

FOR LEASE: 3 RETAIL SPACES | 1,000 - 3,600 SF

339 N. Broad St, Philadelphia, PA 19107

EQUITY RETAIL BROKERS



SPACE A

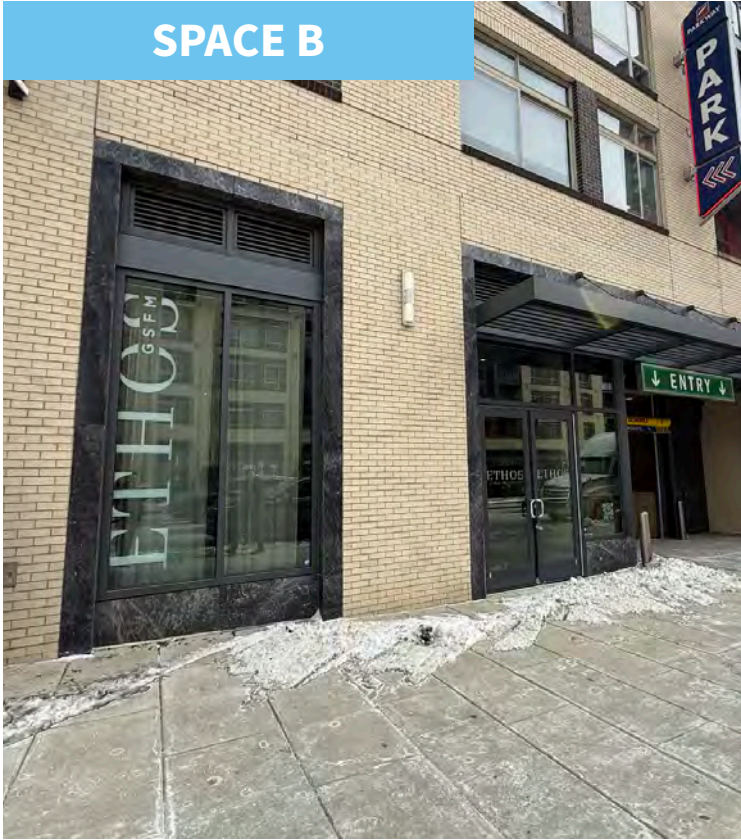


FOR LEASE: 3 RETAIL SPACES | 1,000 - 3,600 SF

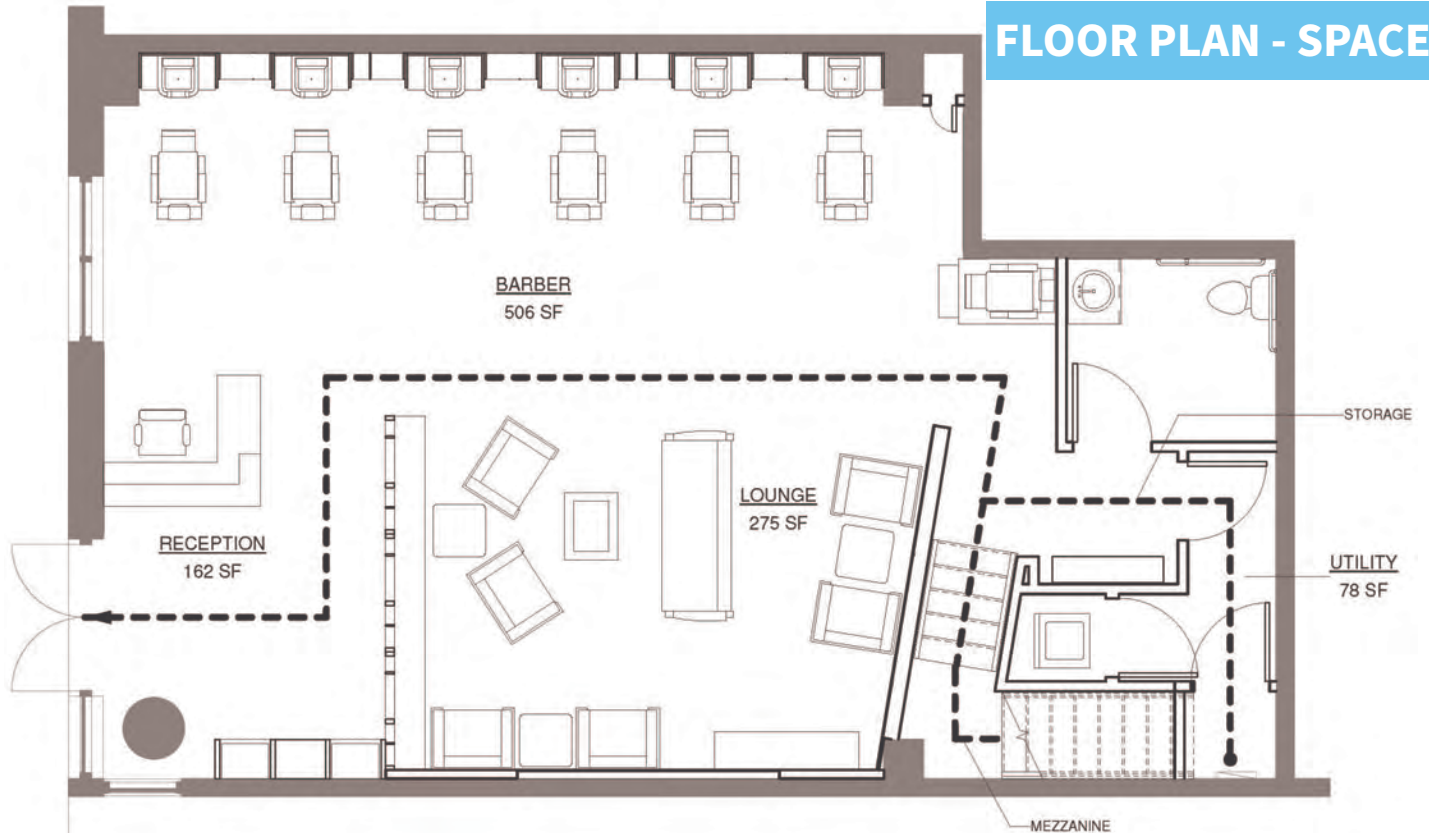
339 N. Broad St, Philadelphia, PA 19107

EQUITY RETAIL BROKERS

SPACE B



FLOOR PLAN - SPACE B



FOR LEASE: 3 RETAIL SPACES | 1,000 - 3,600 SF

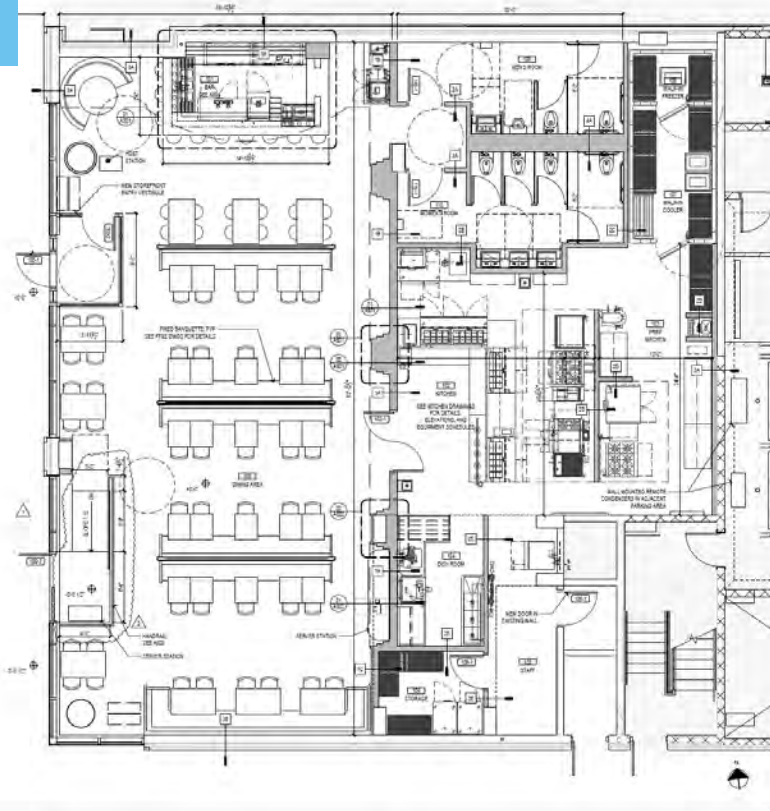
339 N. Broad St, Philadelphia, PA 19107

EQUITY RETAIL BROKERS

SPACE C

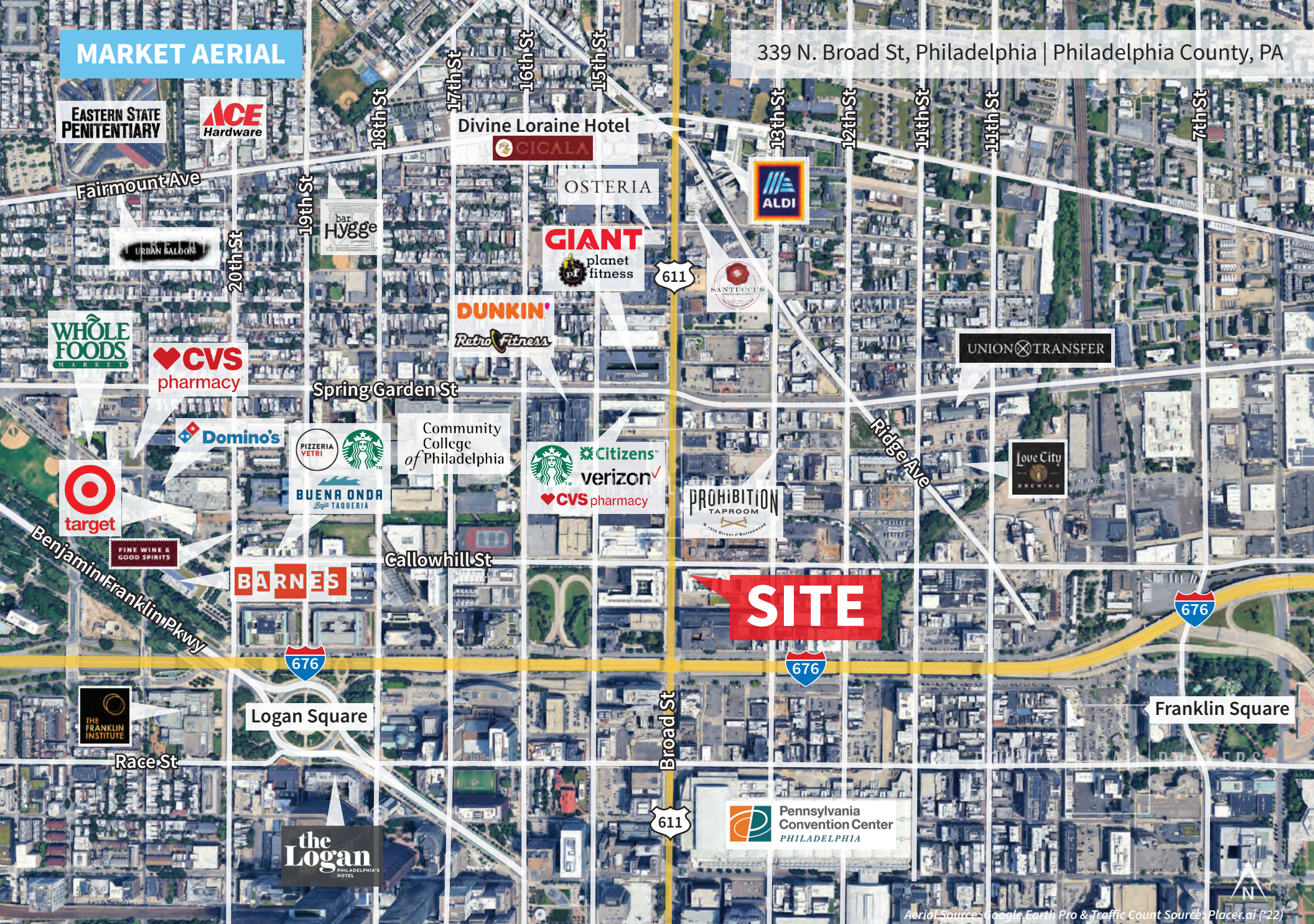


FLOOR PLAN - SPACE C



MARKET AERIAL

339 N. Broad St, Philadelphia | Philadelphia County, PA



Compliments of:

Equity Retail Brokers ■ 531 W. Germantown Pike, Ste 103 ■ Plymouth Meeting, PA 19462 ■ 610.645.7700 ■ www.equityretailbrokers.com

03/25

EQUITY RETAIL BROKERS

Aerial Source: Google Earth Pro & Traffic Count Source: Placer.ai #22