

**FOR LEASE: 2,492 SF GROUND FLOOR RETAIL SPACE  
+ 1,629 SF BASEMENT**  
1350 N Front St, Philadelphia, PA



## PROPERTY FEATURES & DETAILS

- New construction retail space in the heart of Fishtown (15 residential units above)
- 2,492 SF + 1,629 SF basement
- 2 blocks from the “El” Girard Station
- Join the emergence of the Front Street Corridor
- Zoning: CMX-3
- Ceiling Height: 12’9” throughout
- Restaurant venting possible
- Dedicated outdoor seating area
- Steps from popular breweries, distilleries, top restaurants and coffee shops

## CONTACT

**NATHAN RHODES**  
nrhodes@equityretailbrokers.com  
DIRECT: 484.531.2076

**STEVE JEFFRIES**  
sjeffries@equityretailbrokers.com  
DIRECT: 484.531.2250

**WILLIAM CICCARELLI**  
wccicarelli@equityretailbrokers.com  
DIRECT: 484.531.2209



**FOR LEASE: 2,492 SF GROUND FLOOR RETAIL SPACE  
+ 1,629 SF BASEMENT**  
1350 N Front St, Philadelphia, PA

EQUITY RETAIL BROKERS



Demographic Overview (0.25, 0.5, 1-mile radius)



The right space. The right move.

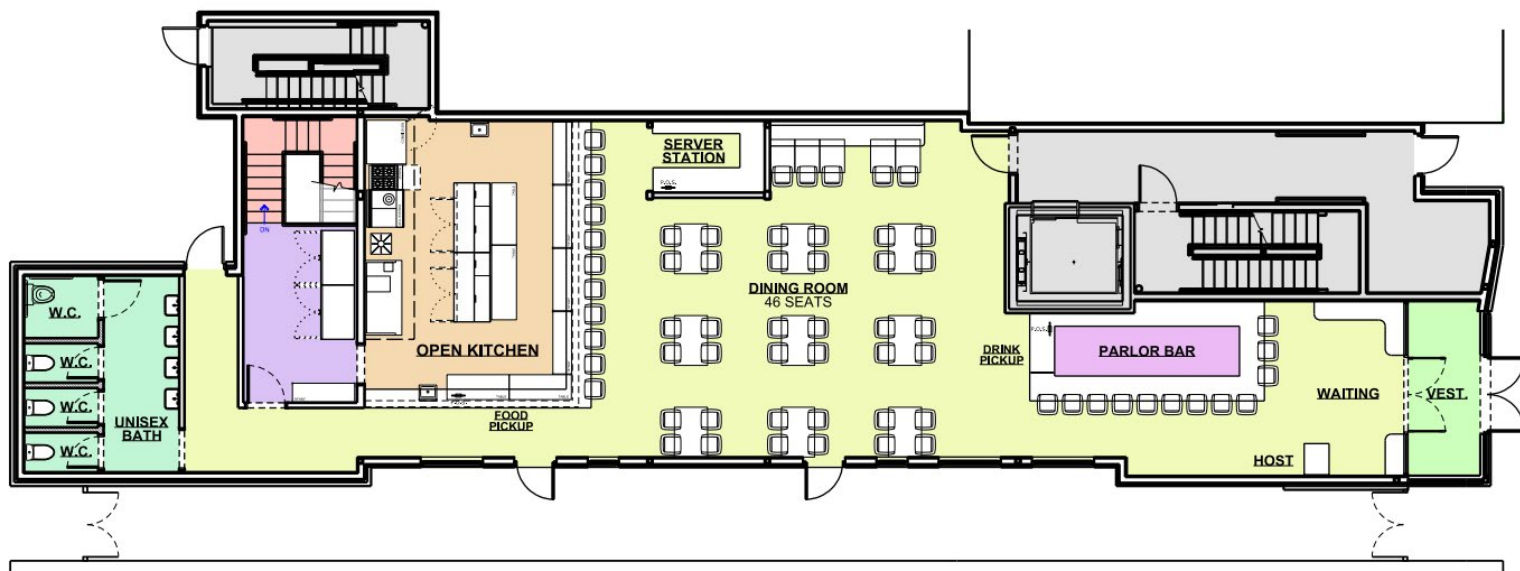


Information concerning this offering is from sources deemed reliable but no warranty is made to the accuracy thereof and it is submitted subject to errors, omissions, changes of price or other conditions, prior to sale or lease or withdrawal without notice. Equity Retail Brokers is licensed in PA, NJ, & DE. Nathan Rhodes, Steve Jeffries, and William Ciccarelli are licensed salespersons in PA.

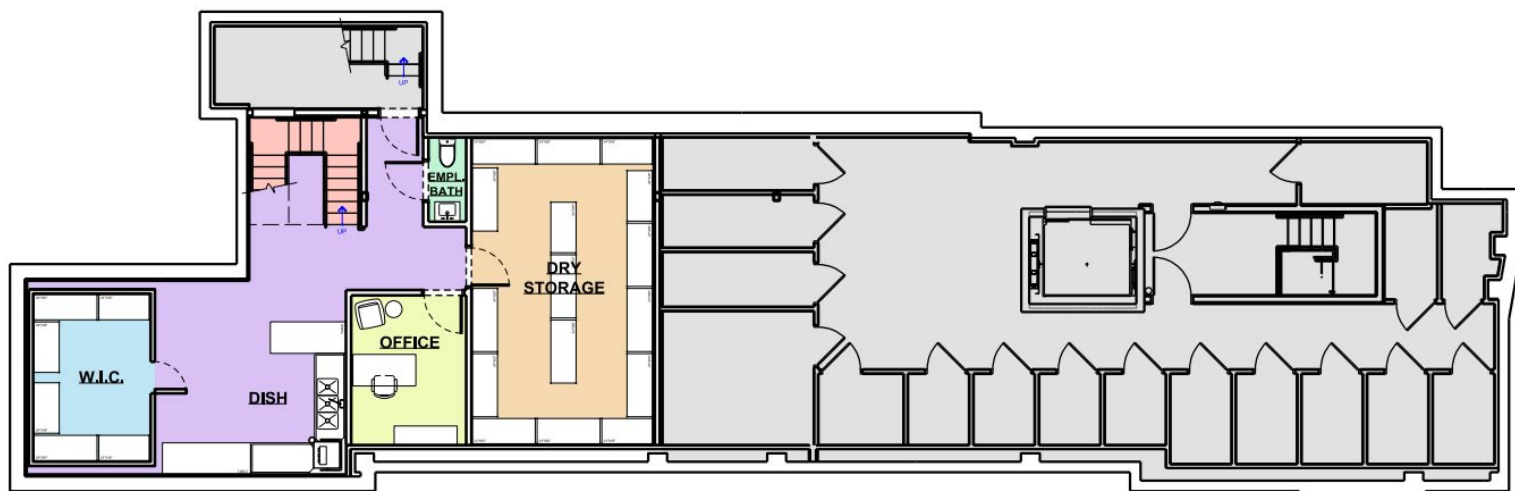


**FOR LEASE: 2,492 SF GROUND FLOOR RETAIL SPACE  
+ 1,629 SF BASEMENT**  
1350 N Front St, Philadelphia, PA

FLOOR PLANS



RETAIL SPACE: 2,492 SF

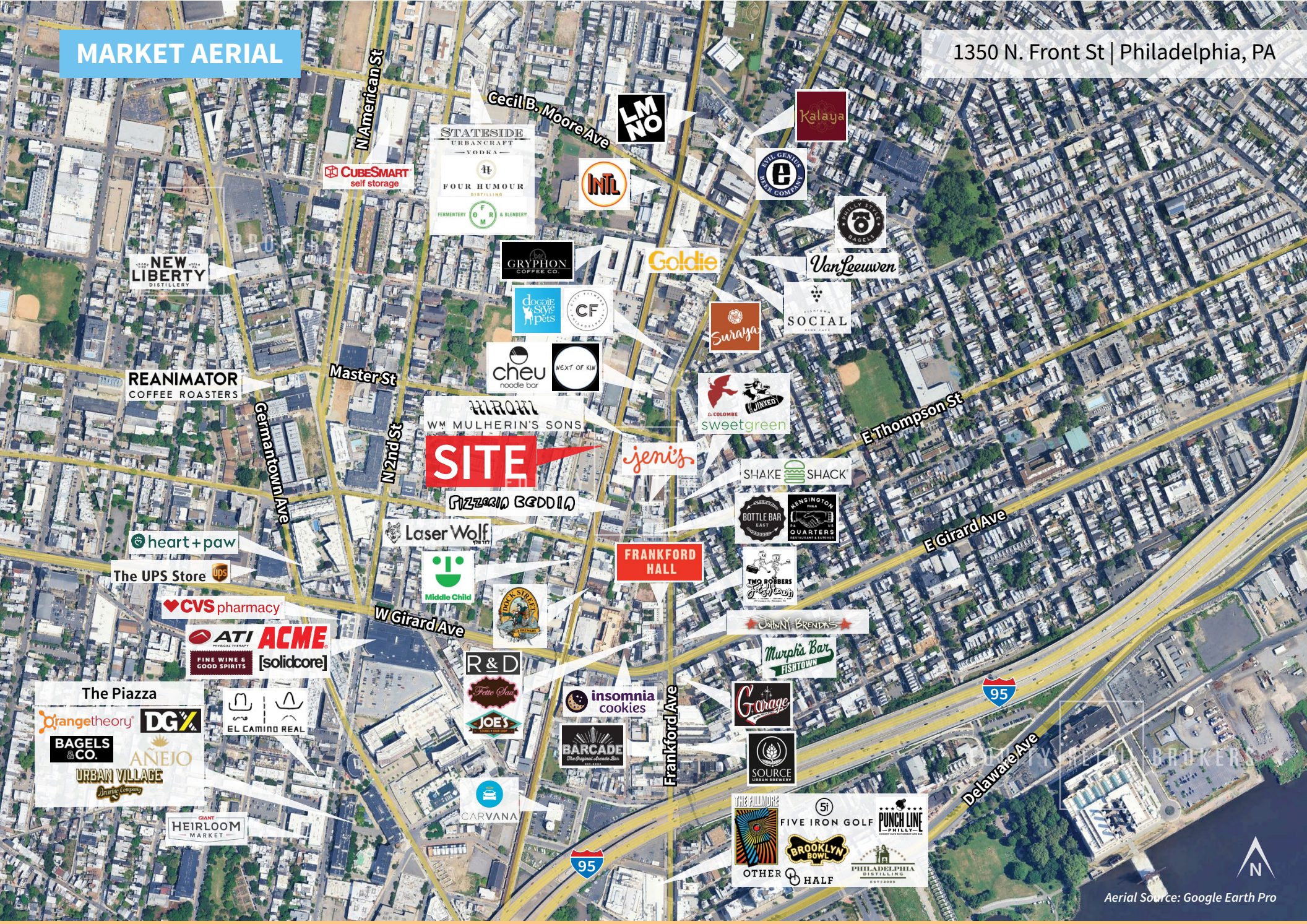


BASEMENT: 1,629 SF



# MARKET AERIAL

1350 N. Front St | Philadelphia, PA



Aerial Source: Google Earth Pro