

## FRIENDLY PLAZA

For Lease: 11,120 SF

3141 Frankford Ave | Philadelphia, PA 19134

EQUITY RETAIL BROKERS



### PROPERTY FEATURES

- Up to 11,120 SF available (demisable)
- Ideal for any retail, medical or distribution tenant
- Rare off street parking
- Pylon signage with great visibility along Frankford Ave

### LOCATION DETAILS

- Join Area Tenants: Dollar Tree, Lowe's, ShopRite, Target and Petco
- Positioned directly between the Kensington and Port Richmond neighborhoods
- Close proximity to I-95
- 61,726 people within 1-mile radius

### CONTACT

CONOR TUNNO

ctunno@equityretailbrokers.com

CELL 484.796.1201

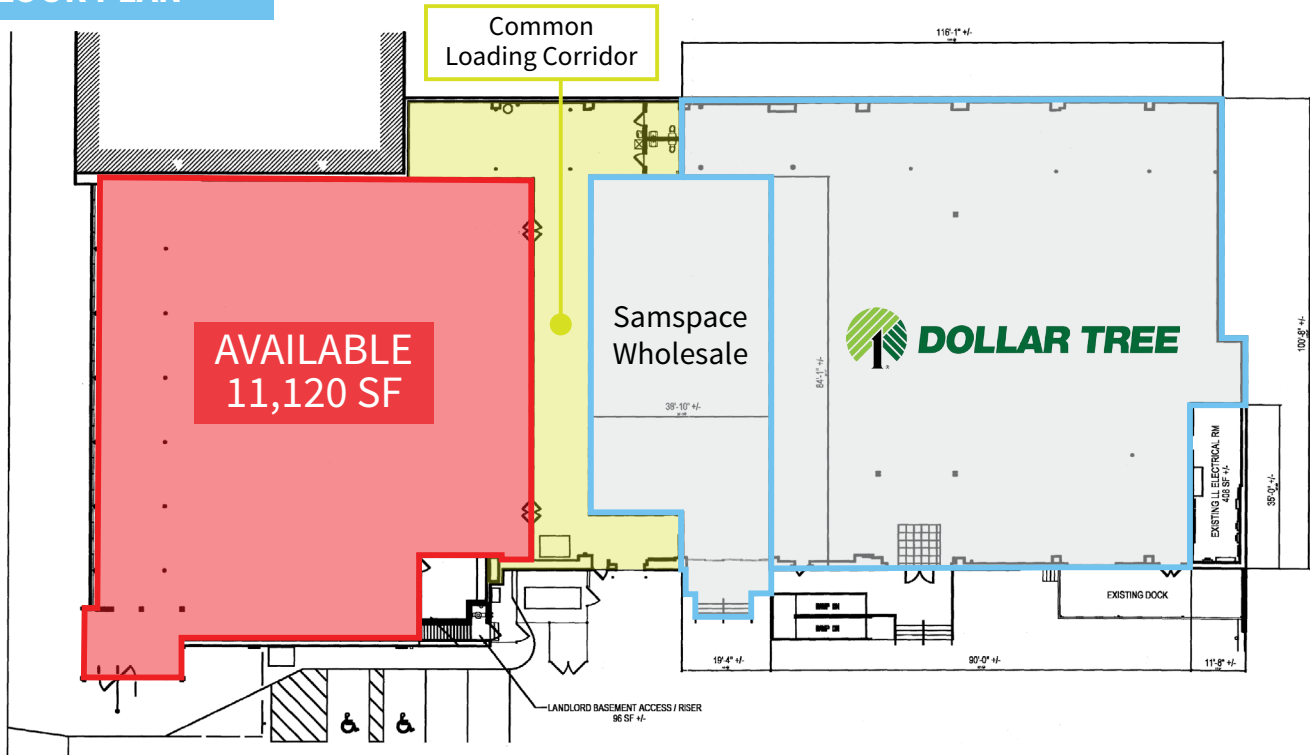
STEVE JEFFRIES

**FRIENDLY PLAZA**  
**For Lease: 11,120 SF**

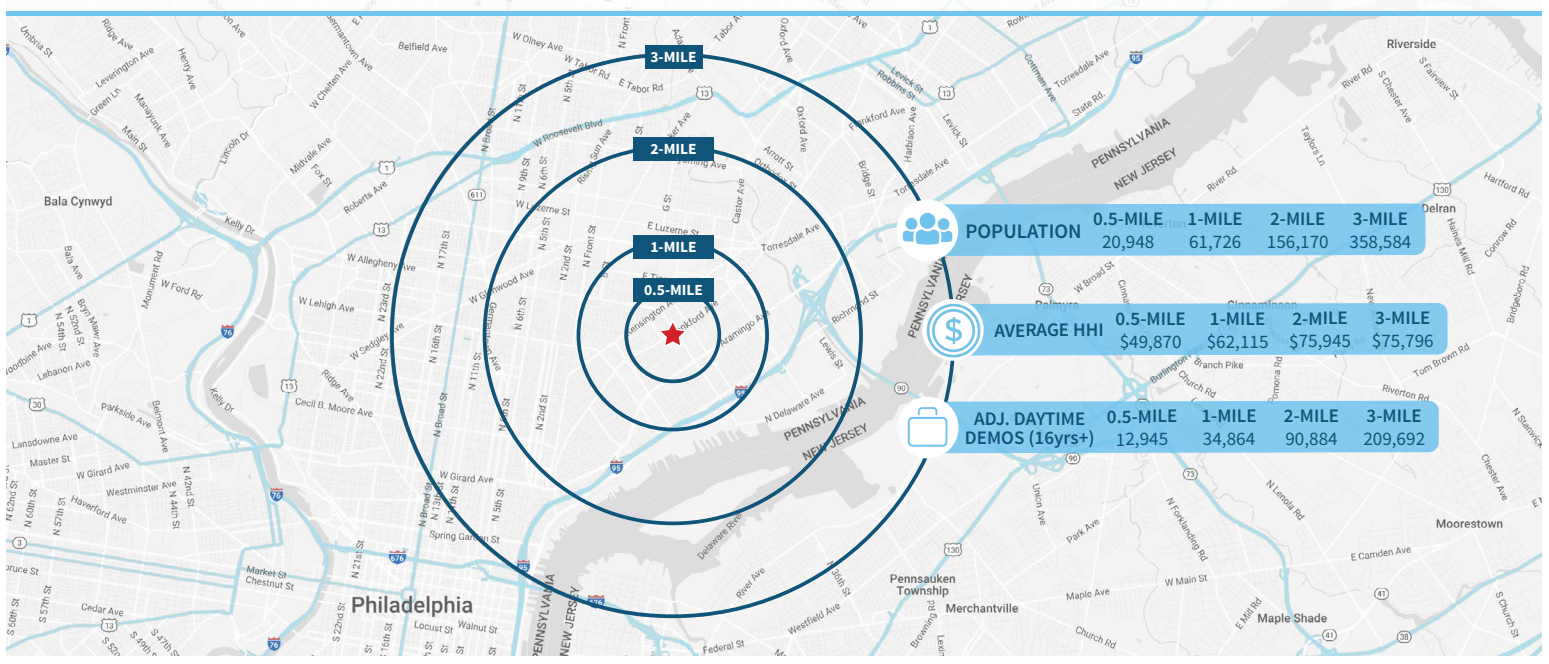
3141 Frankford Ave | Philadelphia, PA 19134

EQUITY RETAIL BROKERS

**FLOOR PLAN**



**Demographic Overview (0.5, 1, 2, 3-mile radius)**

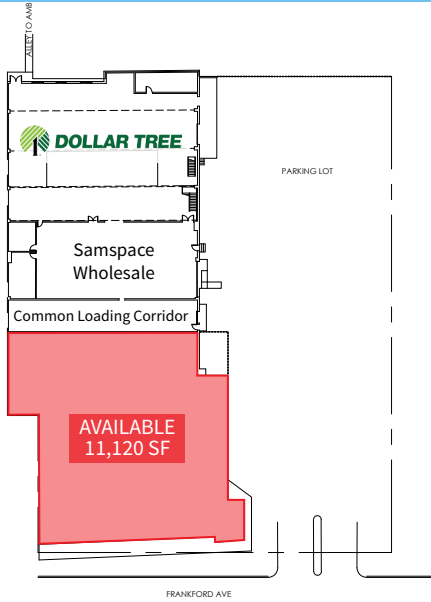


**The right space. The right move.**

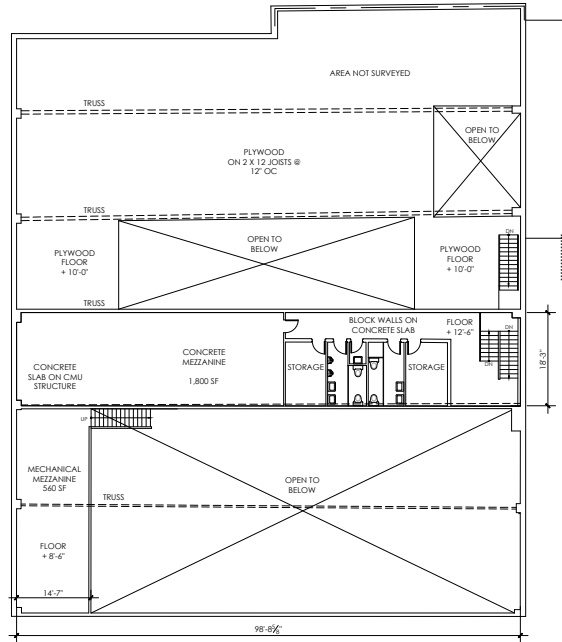


Information concerning this offering is from sources deemed reliable but no warranty is made to the accuracy thereof and it is submitted subject to errors, omissions, changes of price or other conditions, prior to sale or lease or withdrawal without notice. Equity Retail Brokers is licensed in PA, NJ, & DE. Conor Tunno and Steve Jeffries are licensed salespersons in PA.

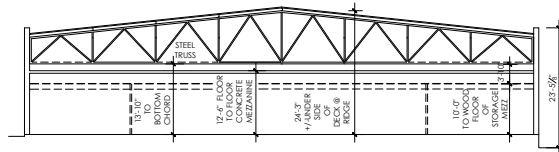
# BUILDING SURVEY



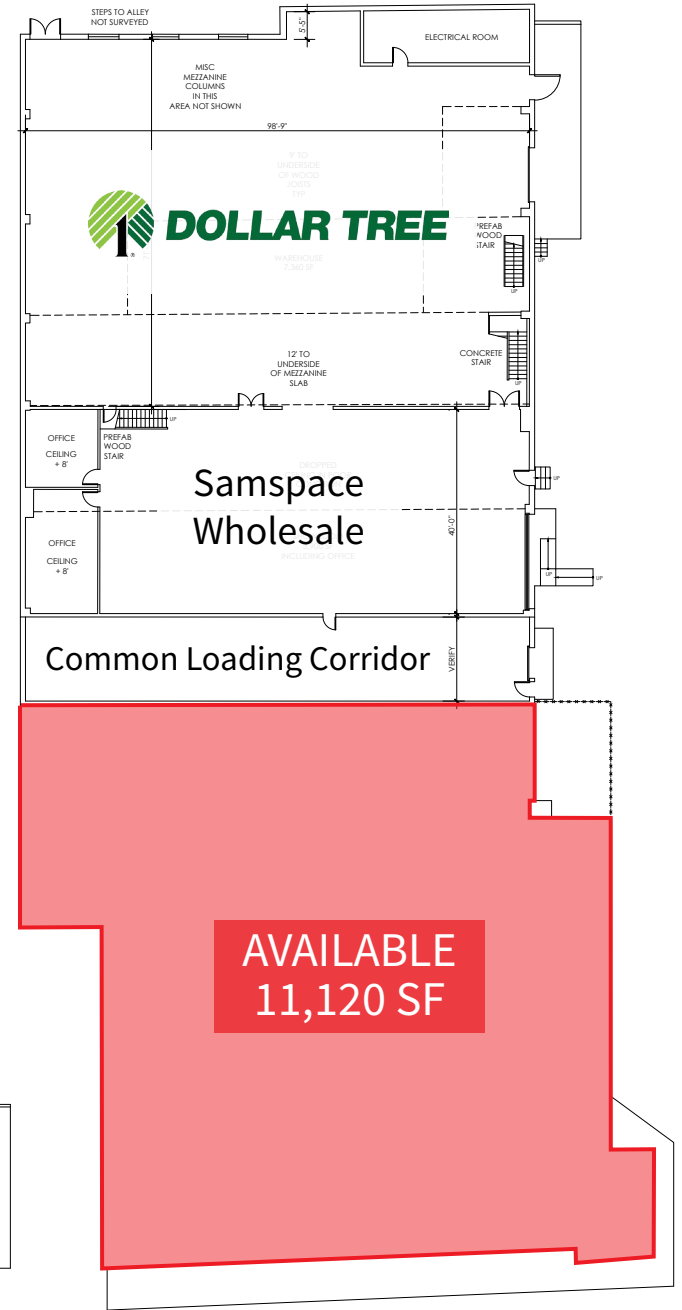
1 PLOT PLAN  
SCALE: 1/32" = 1'-0"



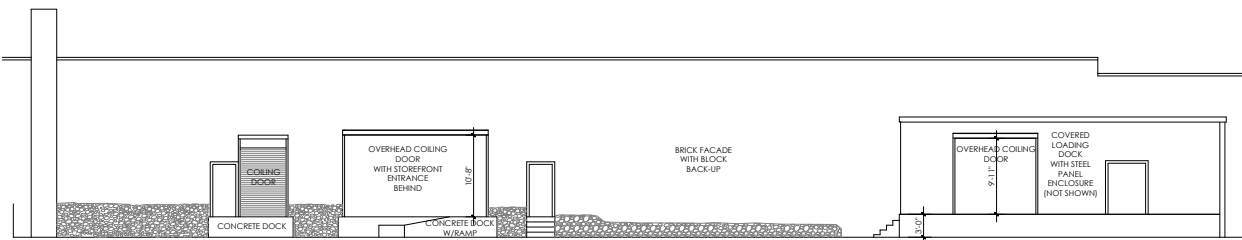
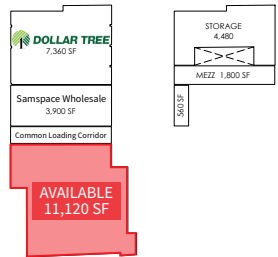
MEZZANINE  
SCALE: 3/32" = 1'-0"



SECTION AT CONCRETE MEZZANINE  
SCALE: 3/32" = 1'-0"



GROUND LEVEL PLAN  
SCALE: 3/32" = 1'-0"



EXTERIOR ELEVATION  
SCALE: 1/8" = 1'-0"



