

# THE COMMONS AT BERLIN TOWNSHIP

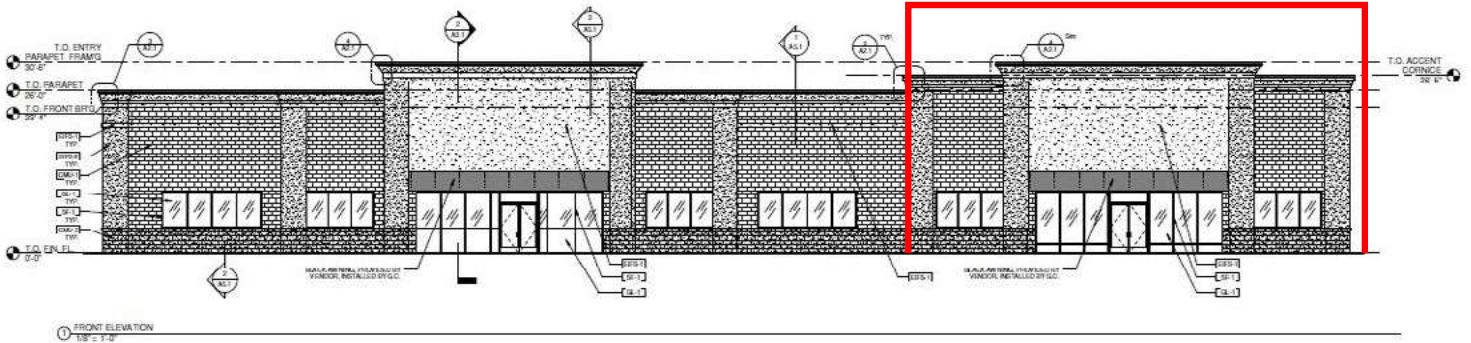
For Lease: ±7,000 SF (Divisible)

84 Haddon Avenue | West Berlin, Camden County, NJ 08091

EQUITY RETAIL BROKERS



## FRONT ELEVATION



## PROPERTY FEATURES

- New construction
- Flexible floor plan
- Join Team Elite Gymnastics and Dollar Tree (NAP)
- Ample parking
- Monument signage available

## LOCATION DETAILS

- Located across from Berlin Circle Plaza (ShopRite, Five Below, Home Depot, Burlington, Marshalls, and more)
- Signalized access at Walker Avenue
- Property centered between Routes 30 and 73

## CONTACT

DAVID GOODMAN

dgoodman@equityretailbrokers.com

DIRECT 484.417.2219

KEITH SEYMOUR

kseymour@equityretailbrokers.com

DIRECT 484.417.2249



# THE COMMONS AT BERLIN TOWNSHIP

For Lease: ±7,000 SF (Divisible)

84 Haddon Avenue | West Berlin, Camden County, NJ 08091

EQUITY RETAIL BROKERS



Aerial Source: Google Earth Pro & Traffic Count Source: Placer.oi (23)

## Demographic Overview (1, 3, 5-mile radius)

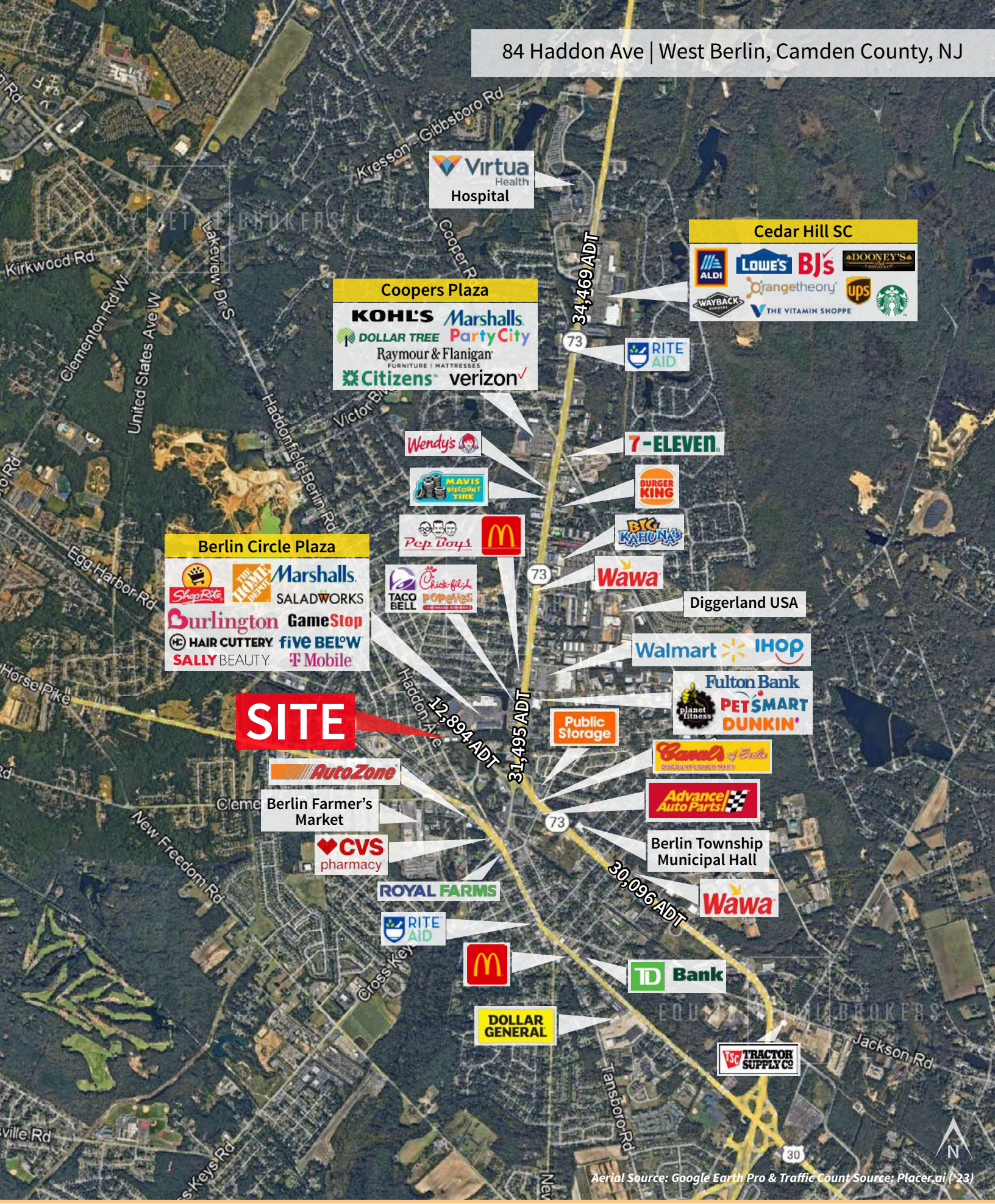


The right space. The right move.



Information concerning this offering is from sources deemed reliable but no warranty is made to the accuracy thereof and it is submitted subject to errors, omissions, changes of price or other conditions, prior to sale or lease or withdrawal without notice. Equity Retail Brokers is licensed in PA, NJ, & DE. David Goodman is a licensed salesperson in PA & NJ. Keith Seymour is a licensed real estate salesperson in PA, NJ, & DE.





**SITE**

**Coopers Plaza**

**KOHL'S** **Marshalls**  
**DOLLAR TREE** **Party City**  
 Raymour & Flanigan  
 FURNITURE | MATTRESSES  
**Citizens** **verizon**

**Cedar Hill SC**

**ALDI** **LOWE'S** **BJ's** **DOONEY'S**  
**Orangetheory** **UPS** **Starbucks**  
**WAYBACK** **THE VITAMIN SHOPPE**

**Berlin Circle Plaza**

**ShopRite** **THE FARMER'S MARKET** **Marshalls**  
**SALADWORKS**  
**Burlington** **GameStop**  
**HAIR CUTTERY** **FIVE BELOW**  
**SALLY BEAUTY** **T-Mobile**

**AutoZone**

**Berlin Farmer's Market**

**CVS pharmacy**

**ROYAL FARMS**

**RITE AID**

**McDonald's**

**DOLLAR GENERAL**

**Walmart** **IHOP**

**Fulton Bank** **planet fitness** **PETSMART** **DUNKIN'**

**Carval's of Berlin**  
 GAS | SUBS | FISH & CHIPS | MARY'S

**Advance Auto Parts**

**Berlin Township Municipal Hall**

**Wawa**

**TD Bank**

**TRACTOR SUPPLY CO.**

Aerial Source: Google Earth Pro & Traffic Count Source: Placer.ai (~23)