

FOR LEASE: ±2,206 SF FREESTANDING BUILDING W/ DRIVE-THRU

1234 W. Landis Ave, Vineland, NJ 08360

EQUITY RETAIL BROKERS



PROPERTY FEATURES & DETAILS

- Existing, former Bank available for lease
- Adjacent to Walmart Supercenter, Taco Bell, and AT&T
- Fully signalized intersection
- Exceptional visibility
- Seeking Banks, fast food, QSR, and medical users



LOCATION DETAILS

- Area Tenants include ShopRite, Walmart, Planet Fitness, Starbucks, Panda Express, Chick-fil-A, Lidl, and more
- Located on Landis Ave corridor in Vineland retail market
- Positioned in between Delsea Dr and NJ-55

CONTACT

KEITH SEYMOUR

kseymour@equityretailbrokers.com

DIRECT 484.417.2249

FOR LEASE: ±2,206 SF FREESTANDING BUILDING W/ DRIVE-THRU
1234 W. Landis Ave, Vineland, NJ 08360

EQUITY RETAIL BROKERS

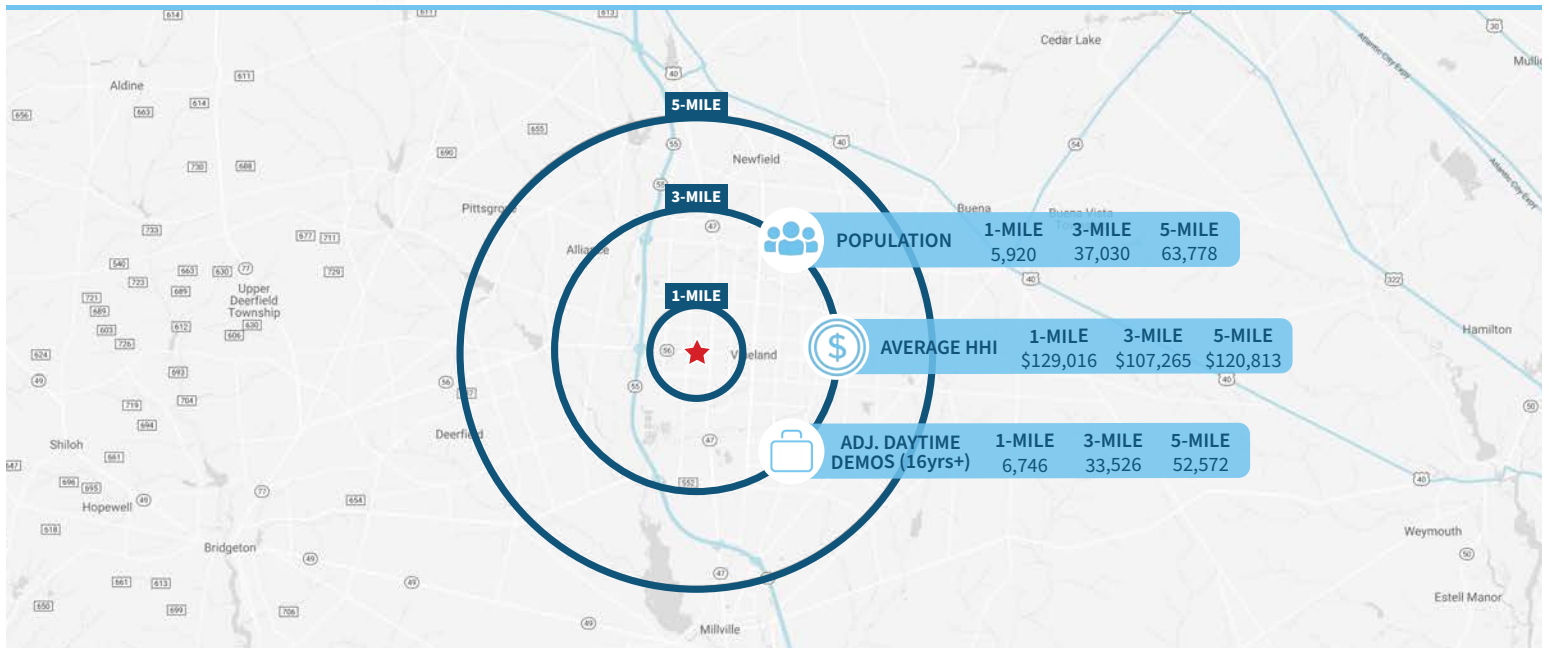


FOR LEASE: ±2,206 SF FREESTANDING BUILDING W/ DRIVE-THRU
 1234 W. Landis Ave, Vineland, NJ 08360

EQUITY RETAIL BROKERS



Demographic Overview (1, 3, 5-mile radius)



The right space. The right move.

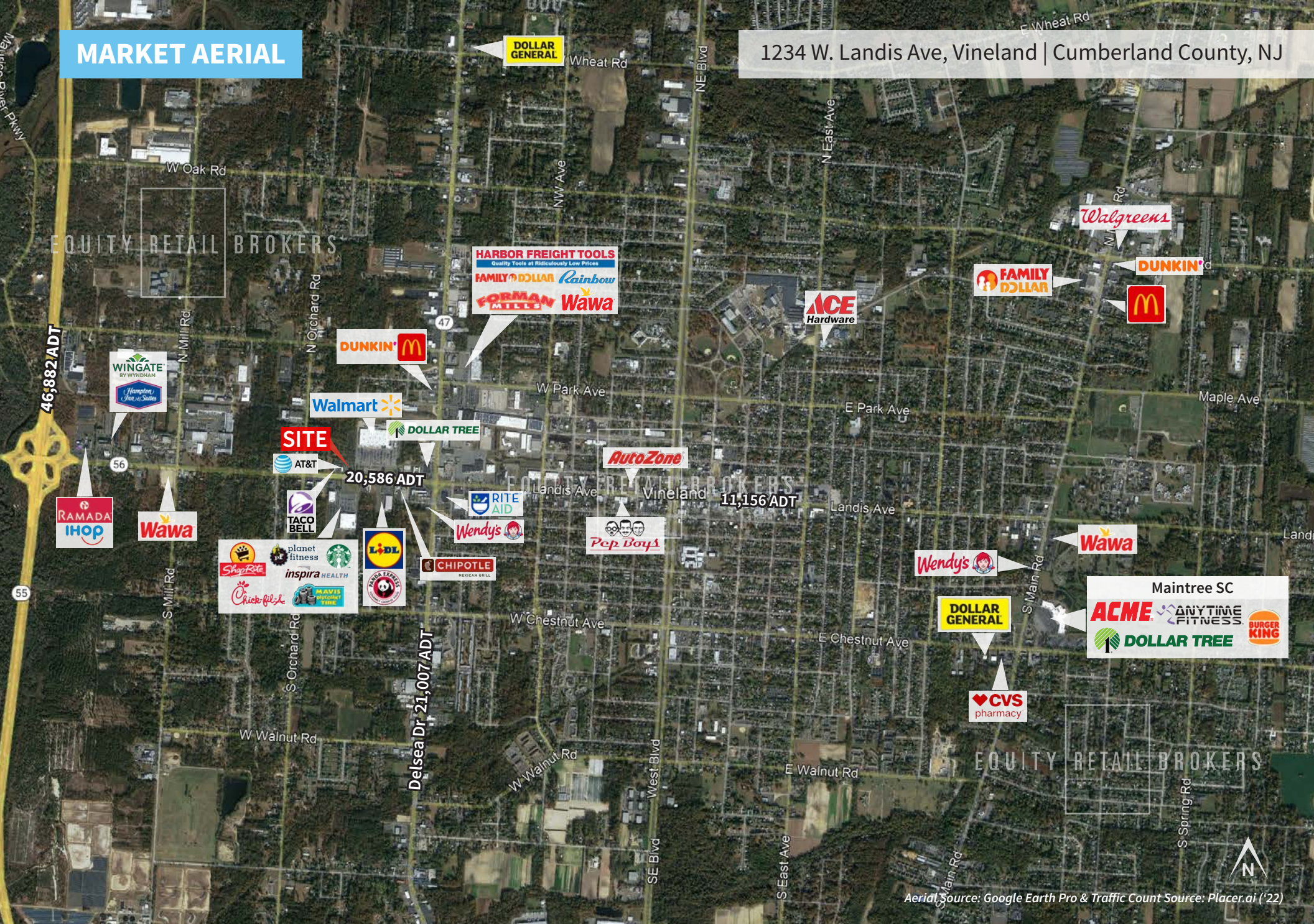


Information concerning this offering is from sources deemed reliable but no warranty is made to the accuracy thereof and it is submitted subject to errors, omissions, changes of price or other conditions, prior to sale or lease or withdrawal without notice. Equity Retail Brokers is licensed in PA, NJ, & DE. David Goodman is a licensed salesperson in PA & NJ.

07/24

MARKET AERIAL

1234 W. Landis Ave, Vineland | Cumberland County, NJ



SITE
20,586 ADT

11,156 ADT

Aerial Source: Google Earth Pro & Traffic Count Source: Placer.ai ('22)

Compliments of:

Equity Retail Brokers ■ 531 W. Germantown Pike, Ste 103 ■ Plymouth Meeting, PA 19462 ■ 610.645.7700 ■ www.equityretailbrokers.com

06/24

EQUITY RETAIL BROKERS

