

**FOR LEASE: PROPOSED FREESTANDING 1,610 SF RETAIL BUILDING
W/ PATIO, 1,800 SF BUILDING W/ DRIVE-THRU AVAILABLE**
SE Corner of 309 & W. Pumping Station Rd, Richland Twp, PA

EQUITY RETAIL BROKERS

PROPOSED SITE PLAN



PROPERTY FEATURES & DETAILS

- Situated in new development with Taco Bell.
- Nearby retailers include Target, Tractor Supply Co., Planet Fitness, BJ Tire Center, Aldi, Chick-Fil-A, PetSmart, & Best Buy
- Seeking banks, fast food, QSR, and medical users
- Endcap or FS available

LOCATION DETAILS

- Located on Route 309 with direct access and good visibility
- Opposite Richland Marketplace shopping mall.
- Rt 309: 35,214 ADT
- W. Pumping Station Rd: 6,858 ADT

CONTACT

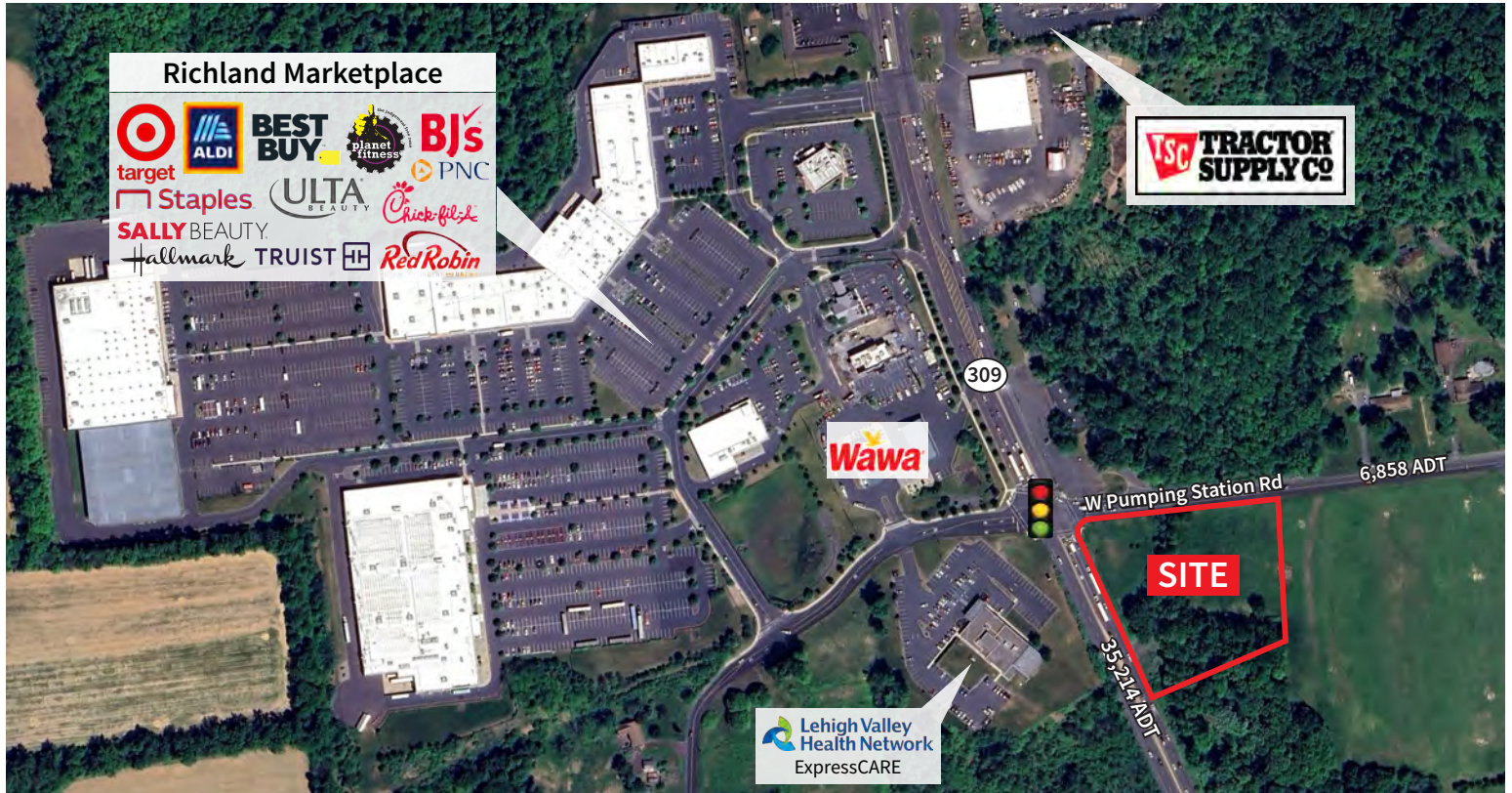
KEITH SEYMOUR

kseymour@equityretailbrokers.com

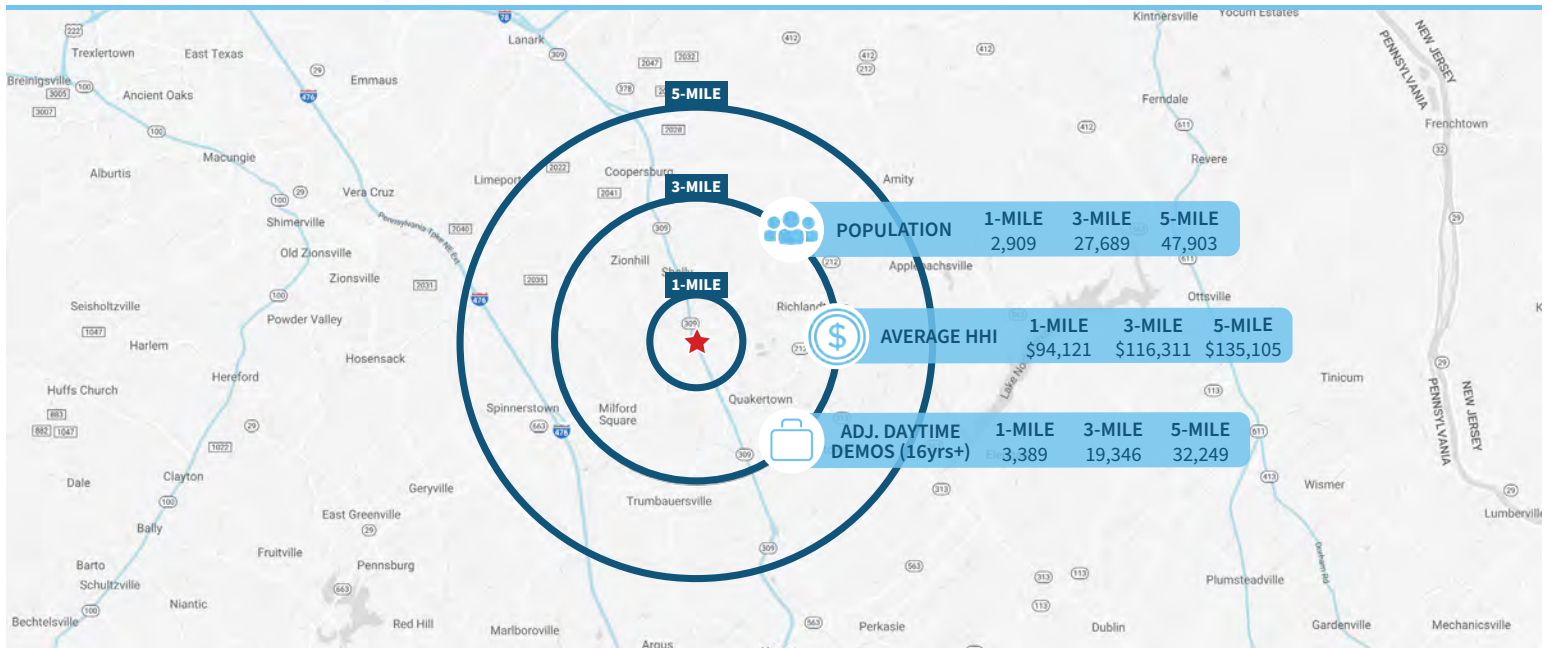
DIRECT 484.417.2249

**FOR LEASE: PROPOSED FREESTANDING 1,610 SF RETAIL BUILDING
W/ PATIO, 1,800 SF BUILDING W/ DRIVE-THRU AVAILABLE**
SE Corner of 309 & W. Pumping Station Rd, Richland Twp, PA

EQUITY RETAIL BROKERS



Demographic Overview (1, 3, 5-mile radius)



The right space. The right move.



Information concerning this offering is from sources deemed reliable but no warranty is made to the accuracy thereof and it is submitted subject to errors, omissions, changes of price or other conditions, prior to sale or lease or withdrawal without notice. Equity Retail Brokers is licensed in PA, NJ, & DE. Keith Seymour is a licensed salesperson in PA & NJ.

06/24

MARKET AERIAL

SE Corner of 309 & Pumping Station Rd, Richland Township | Bucks County, PA



SITE

W Pumping Station Rd

6,858' ADT

35,214' ADT

309

Richland Marketplace

Richland Crossing

Trainers Corner

Quakertown Shopping Plaza

Aerial Source: Google Earth Pro & Traffic Count Source: Regis Online (23)

Compliments of:

Equity Retail Brokers ■ 531 W. Germantown Pike, Ste 103 ■ Plymouth Meeting, PA 19462 ■ 610.645.7700 ■ www.equityretailbrokers.com

06/24

