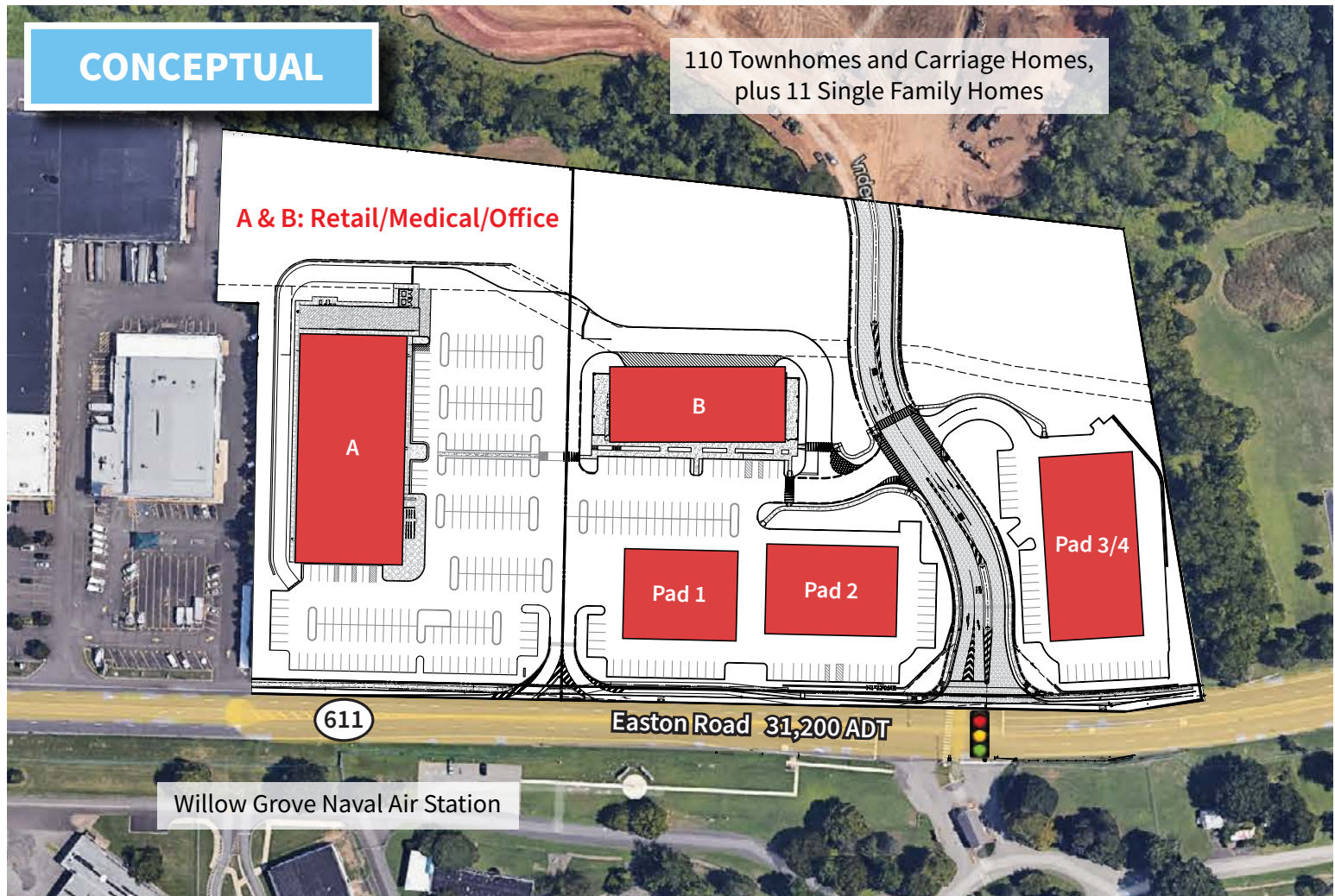


FOR LEASE: FREESTANDING, PADS, INLINE, ENDCAP

1300 Easton Road
Horsham, Montgomery County, PA 19044

EQUITY RETAIL BROKERS



PROPERTY FEATURES & DETAILS

- Full, signalized access and great visibility on Easton Road (Rt. 611)
- Across from the entrance to a proposed 862-acre mixed use project (the Willow Grove Naval Air Station redevelopment)
- At the entrance to Liberty Ridge – 110 new townhomes and carriage homes, plus 11 new single-family homes
- Ideal for retail, restaurant, drive-thru, medical, or office
- Densely populated market w/ national retailers, strong incomes and daytime/weekend traffic

CONTACT

DAVID GOODMAN

dgoodman@equityretailbrokers.com

DIRECT 484.417.2219

KEITH SEYMOUR

kseymour@equityretailbrokers.com

DIRECT 484.417.2249

KEN MCEVOY

kmcevoy@equityretailbrokers.com

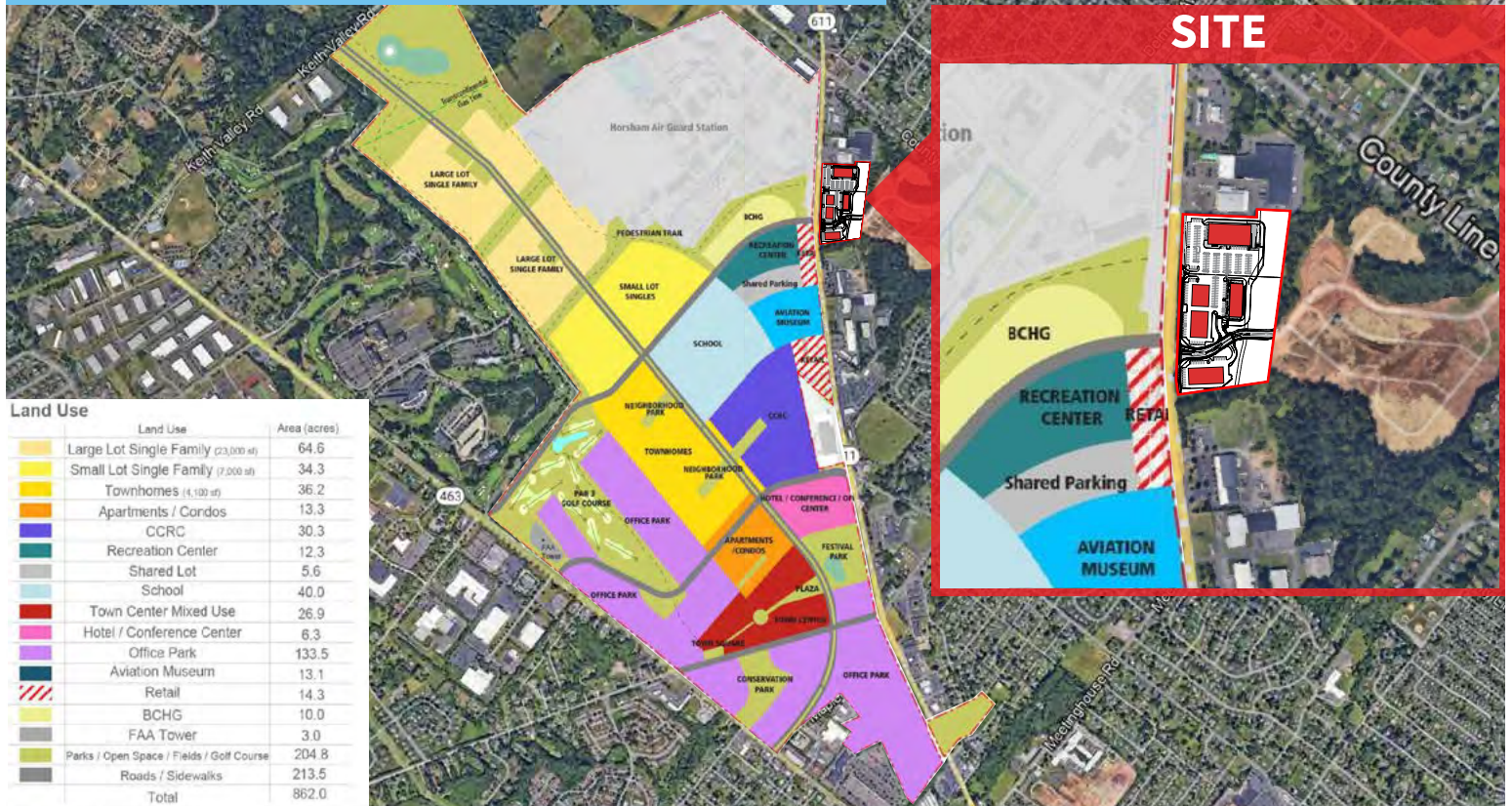
DIRECT 484.417.2226

FOR LEASE: FREESTANDING, PADS, INLINE, ENDCAP

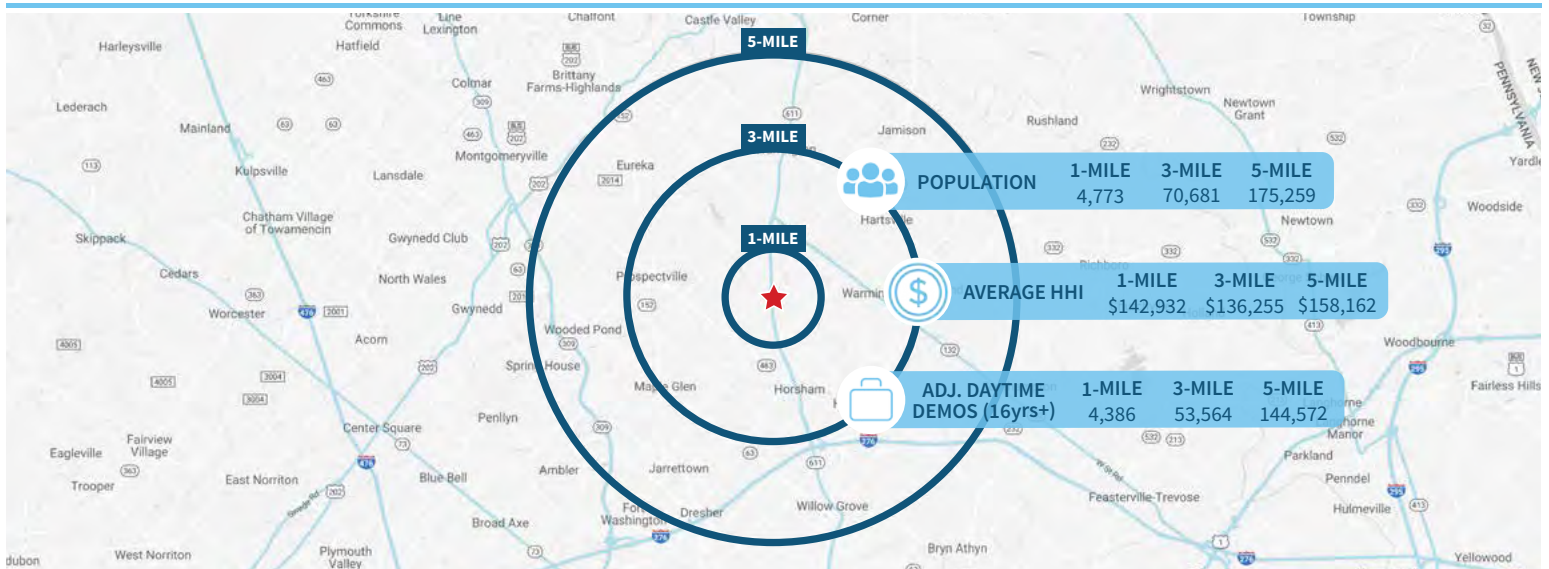
1300 Easton Road
Horsham, Montgomery County, PA 19044

EQUITY RETAIL BROKERS

WILLOW GROVE NAVAL AIR STATION REDEVELOPMENT PLAN



Demographic Overview (1, 3, 5-mile radius)



The right space. The right move.



Information concerning this offering is from sources deemed reliable but no warranty is made to the accuracy thereof and it is submitted subject to errors, omissions, changes of price or other conditions, prior to sale or lease or withdrawal without notice. Equity Retail Brokers is licensed in PA, NJ, & DE. David Goodman & Ken McEvoy are licensed salespersons in PA & NJ and Keith Seymour is a licensed salesperson in PA, NJ, & DE.

HORSHAM MARKET AERIAL

1300 Easton Road | Montgomery County, PA



Aerial Source: Google Earth Pro & Traffic Count Source: Placer.ai ('22)

Compliments of:

EQUITY RETAIL BROKERS

531 W. Germantown Pike, Ste 103 ■ Plymouth Meeting, PA 19462
 610.645.7700 ■ www.equityretailbrokers.com