

**FOR LEASE: 2,220 SF FIRST FLOOR OFFICE/RETAIL SPACE
PLUS 1,012 SF OF BASEMENT STORAGE**

325 South Main Street, Doylestown, Bucks County, PA 18901

EQUITY RETAIL BROKERS



PROPERTY FEATURES & DETAILS

- Ideally located at the entrance to the Doylestown business district
- Excellent visibility and access
- Ample parking
- Front and rear building access
- Short- or long-term lease available



CONTACT

DAVID GOODMAN

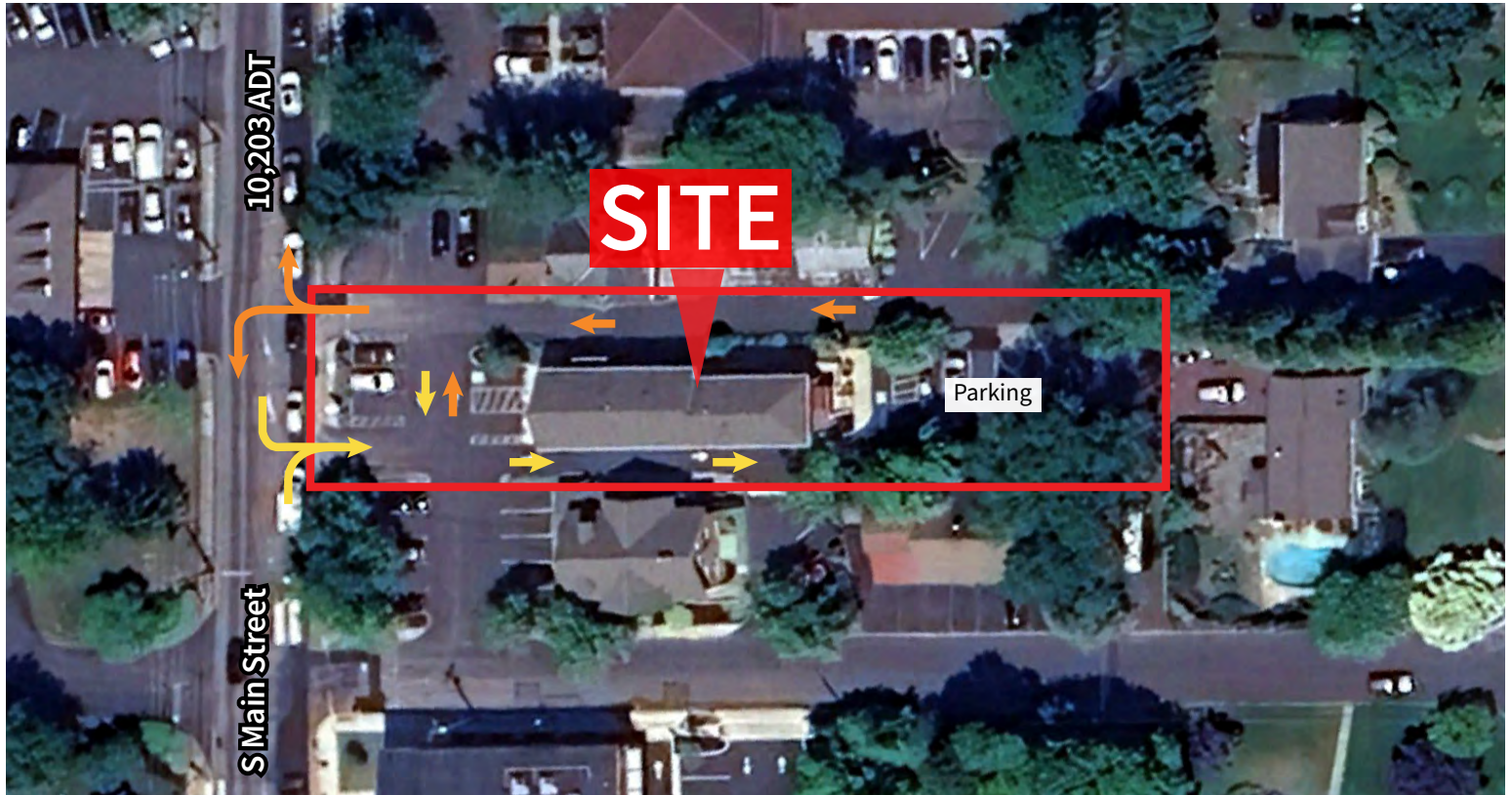
dgoodman@equityretailbrokers.com

DIRECT 484.417.2219

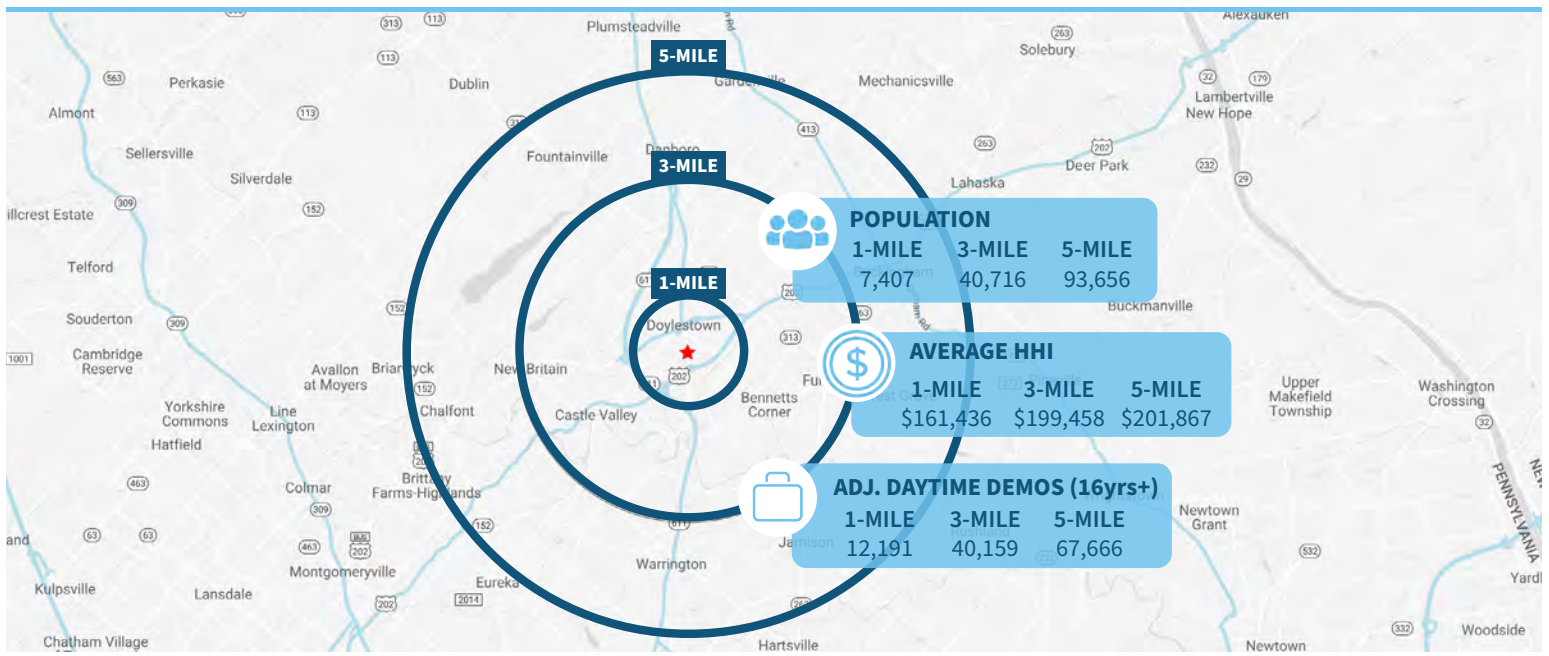
**FOR LEASE: 2,220 SF FIRST FLOOR OFFICE/RETAIL SPACE
PLUS 1,012 SF OF BASEMENT STORAGE**

325 South Main Street, Doylestown, Bucks County, PA 18901

EQUITY RETAIL BROKERS



Demographic Overview (1, 3, 5-mile radius)



The right space. The right move.

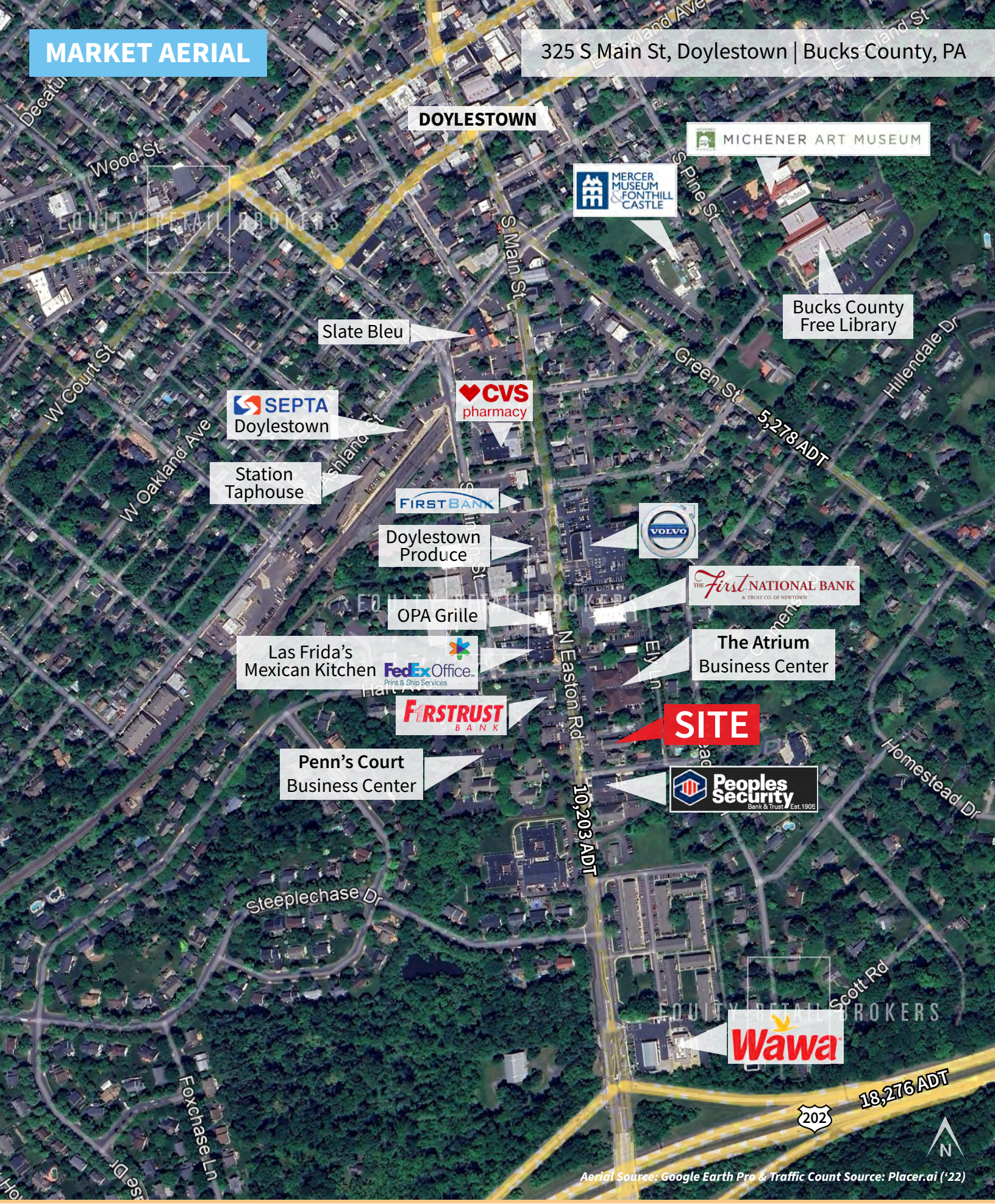


Information concerning this offering is from sources deemed reliable but no warranty is made to the accuracy thereof and it is submitted subject to errors, omissions, changes of price or other conditions, prior to sale or lease or withdrawal without notice. Equity Retail Brokers is licensed in PA, NJ, & DE. David Goodman is a licensed salesperson in PA & NJ.

06/24

MARKET AERIAL

325 S Main St, Doylestown | Bucks County, PA



Aerial Source: Google Earth Pro & Traffic Count Source: Placer.ai ('22)

Compliments of:

EQUITY RETAIL BROKERS

531 W. Germantown Pike, Ste 103 ■ Plymouth Meeting, PA 19462
610.645.7700 ■ www.equityretailbrokers.com

06/24