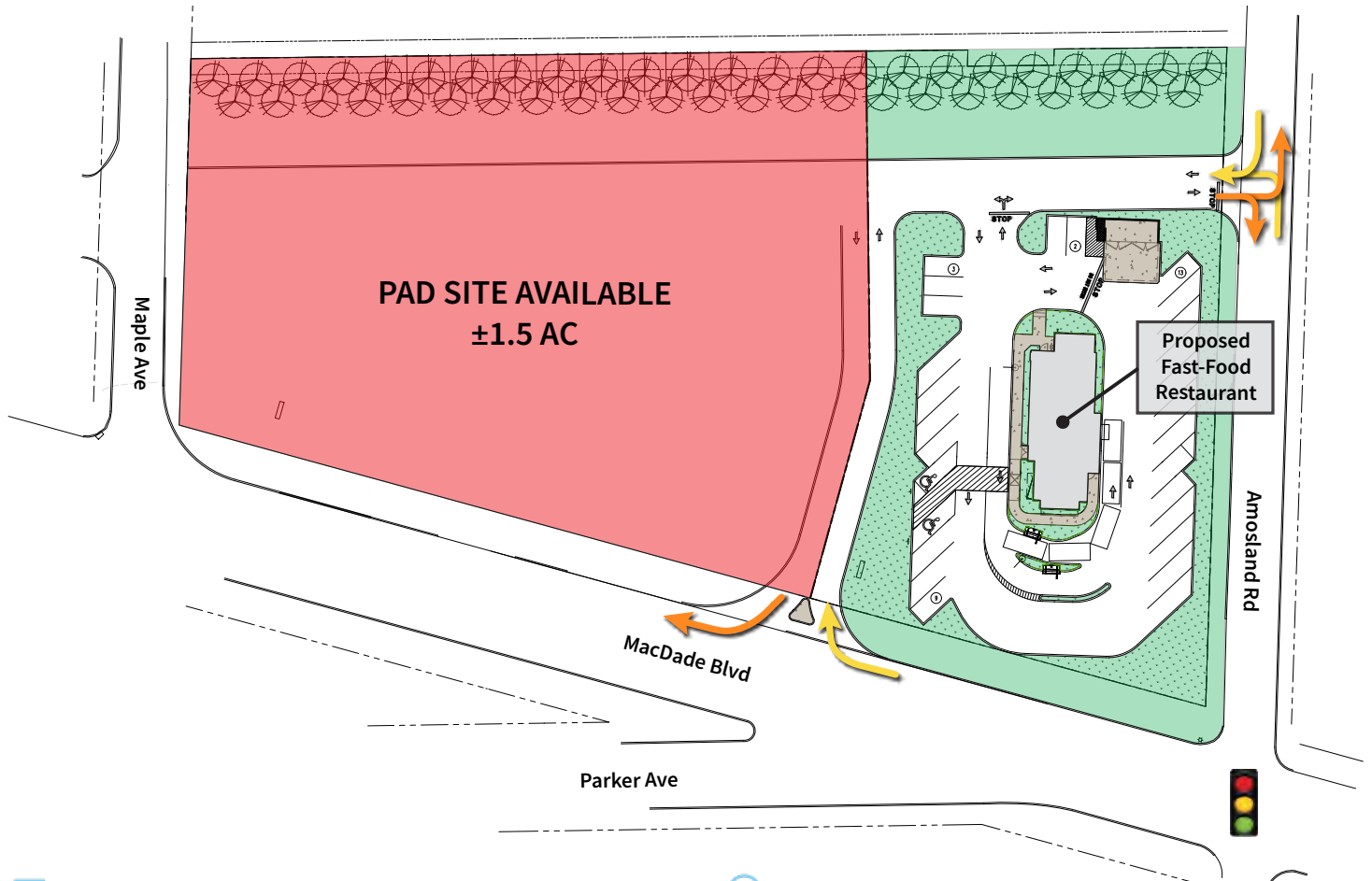


## PAD SITE AVAILABLE

2023 MacDade Blvd, Holmes (Ridley Township)  
Delaware County, PA 19043

BACK ON THE MARKET!



### PROPERTY FEATURES

- Pad site available on ±1.5 acre parcel fronting MacDade Blvd
- For Sale or Ground Lease / Lease
- Available Immediately



### LOCATION DETAILS

- Zoned C-2 (General Commercial District)
- High density trade area with great access and visibility
- Signalized intersection at MacDade Blvd and Amosland Rd
- Easy access to interstates 95 and 476

### CONTACT

DAVID GOODMAN

dgoodman@equityretailbrokers.com

DIRECT 484.417.2219

ROB SAMTMANN

rsamtman@equityretailbrokers.com

DIRECT 484.417.2208

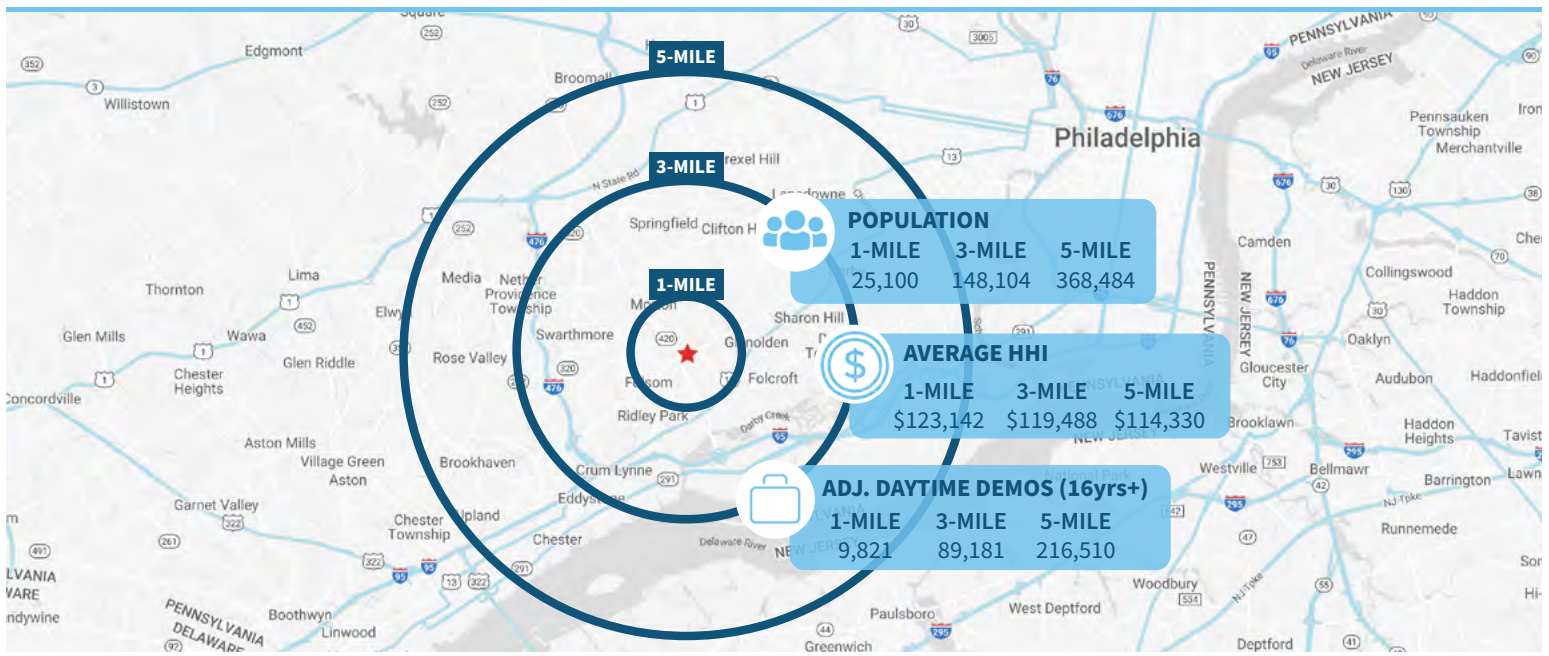
# PAD SITE AVAILABLE

2023 MacDade Blvd, Holmes (Ridley Township)  
Delaware County, PA 19043

EQUITY RETAIL BROKERS



## Demographic Overview (1, 3, 5-mile radius)



The right space. The right move.



Information concerning this offering is from sources deemed reliable but no warranty is made to the accuracy thereof and it is submitted subject to errors, omissions, changes of price or other conditions, prior to sale or lease or withdrawal without notice. Equity Retail Brokers is licensed in PA, NJ, & DE. David Goodman and Rob Samtmann is a licensed salespersons in PA & NJ.

01/24



