

±2 ACRE DEVELOPMENT SITE - LAST PAD SITE AVAILABLE

1257-1261 Hurffville Road

Deptford, Gloucester County, NJ 08096

EQUITY RETAIL BROKERS

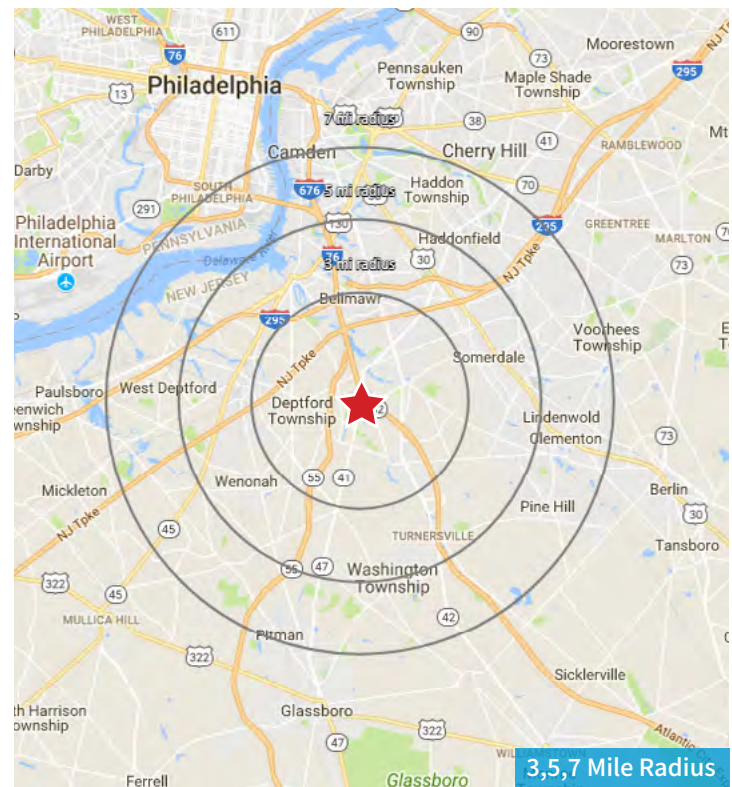


PROPERTY FEATURES

- High Visibility Development Site in the Deptford Mall Area
- Hospitality Plus - Two new hotels planned to join the existing Hampton Inn and Marriott Courtyard
- Freestanding Retail
- For Lease

DETAILS

- Deptford Mall (±1M SF) is one of the three major Malls in the South Jersey Region
- Located near the intersection of Route 55 and Route 42
- The site boasts an extended trade area that pulls from Philadelphia, PA to Vineland, NJ



CONTACT

George Wisnoski
gwisnoski@equityretailbrokers.com
DIRECT 484.417.2220

Equity Retail Brokers | 531 W. Germantown Pike, Ste 103 | Plymouth Meeting, PA 19462 | T: 610.645.7700 | www.equityretailbrokers.com

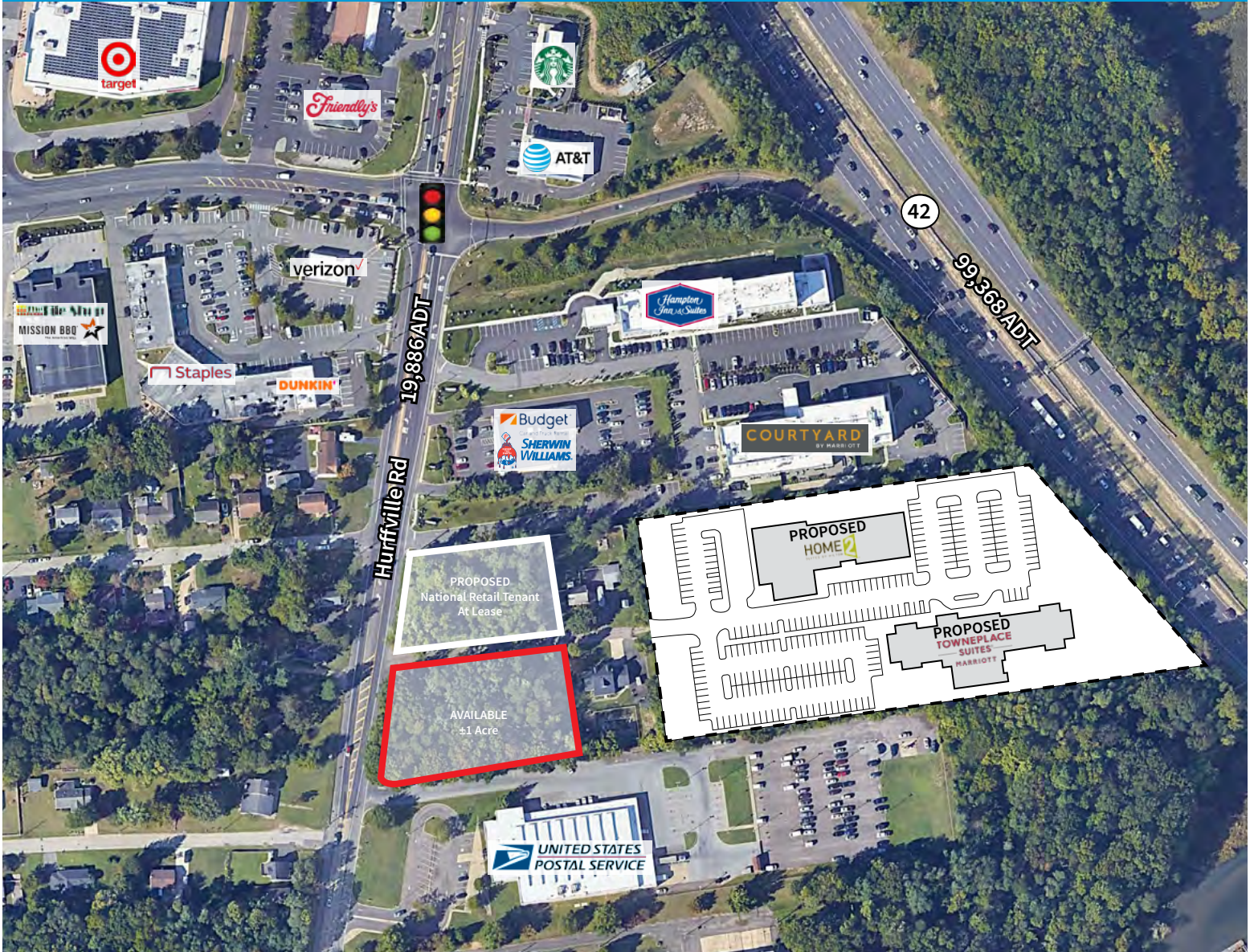
The right space. The right move.

±2 ACRE DEVELOPMENT SITE - LAST PAD SITE AVAILABLE

1257-1261 Hurffville Road
 Deptford, Gloucester County, NJ 08096

EQUITY RETAIL BROKERS

PROPOSED HOTEL SITE PLANS



Demographics	3 Miles	5 Miles	7 Miles
Population	69,179	217,096	407,433
Average HHI	\$90,637	\$96,204	\$99,548
Adj Daytime Demos (16yrs+)	45,981	143,745	289,080

Demographic Data Source: Applied Geographic Solutions, 2020 (REGIS)



Information concerning this offering is from sources deemed reliable but no warranty is made to the accuracy thereof and it is submitted subject to errors, omissions, changes of price or other conditions, prior to sale or lease or withdrawal without notice. Equity Retail Brokers is licensed in PA, NJ, & DE. George Wisnoski is a licensed real estate salesperson in PA, NJ, & DE.

±2 ACRE DEVELOPMENT SITE - LAST PAD SITE AVAILABLE

1257-1261 Hurffville Road
Deptford, Gloucester County, NJ 08096

EQUITY RETAIL BROKERS



George Wisnoski
gwisnoski@equityretailbrokers.com
DIRECT 484.417.2220

Equity Retail Brokers | 531 W. Germantown Pike, Ste 103 | Plymouth Meeting, PA 19462 | T: 610.645.7700 | www.equityretailbrokers.com