

# PRESENTED FOR LEASE BY EQUITY RETAIL BROKERS

## FREESTANDING BUILDING; 3,000 SF

4733 West Chester Pike

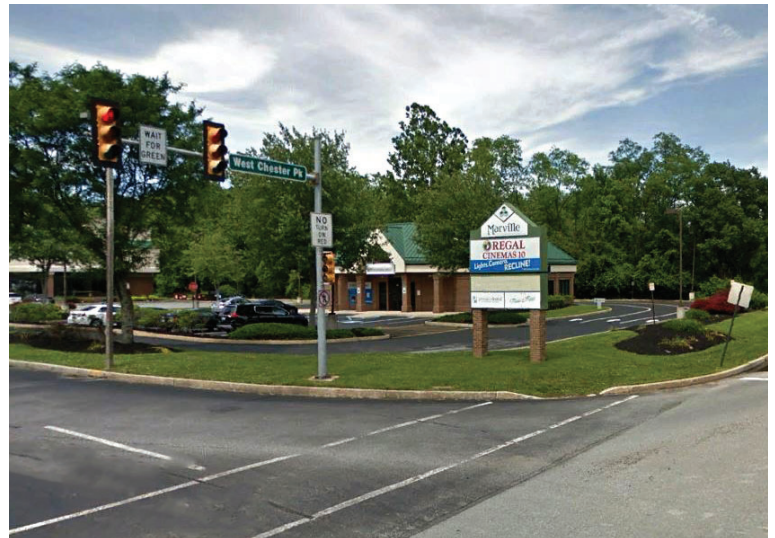
Newtown Square, Delaware County, PA 19073

EQUITY RETAIL BROKERS



### PROPERTY & LOCATION DETAILS

- Join Giant, Starbucks, PJ Whelihan's, Regal Cinemas, Fine Wine & Goods Spirits, Bonefish Grill, Visionworks, and more!
- Freestanding building on West Chester Pike (Route 3)
- Ideal for bank, urgent care or retail use
- Full access at signalized intersection
- Ample parking available
- Great visibility and access
- High incomes



### CONTACT

**David Goodman**

dgoodman@equityretailbrokers.com

DIRECT 484.417.2219

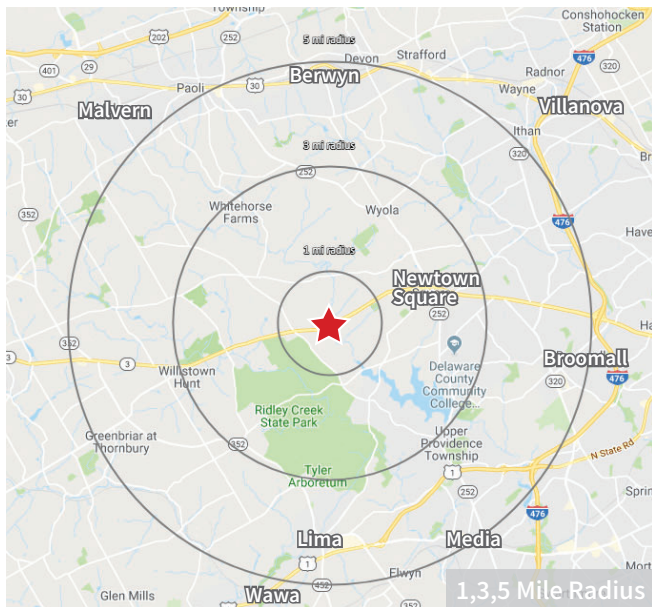
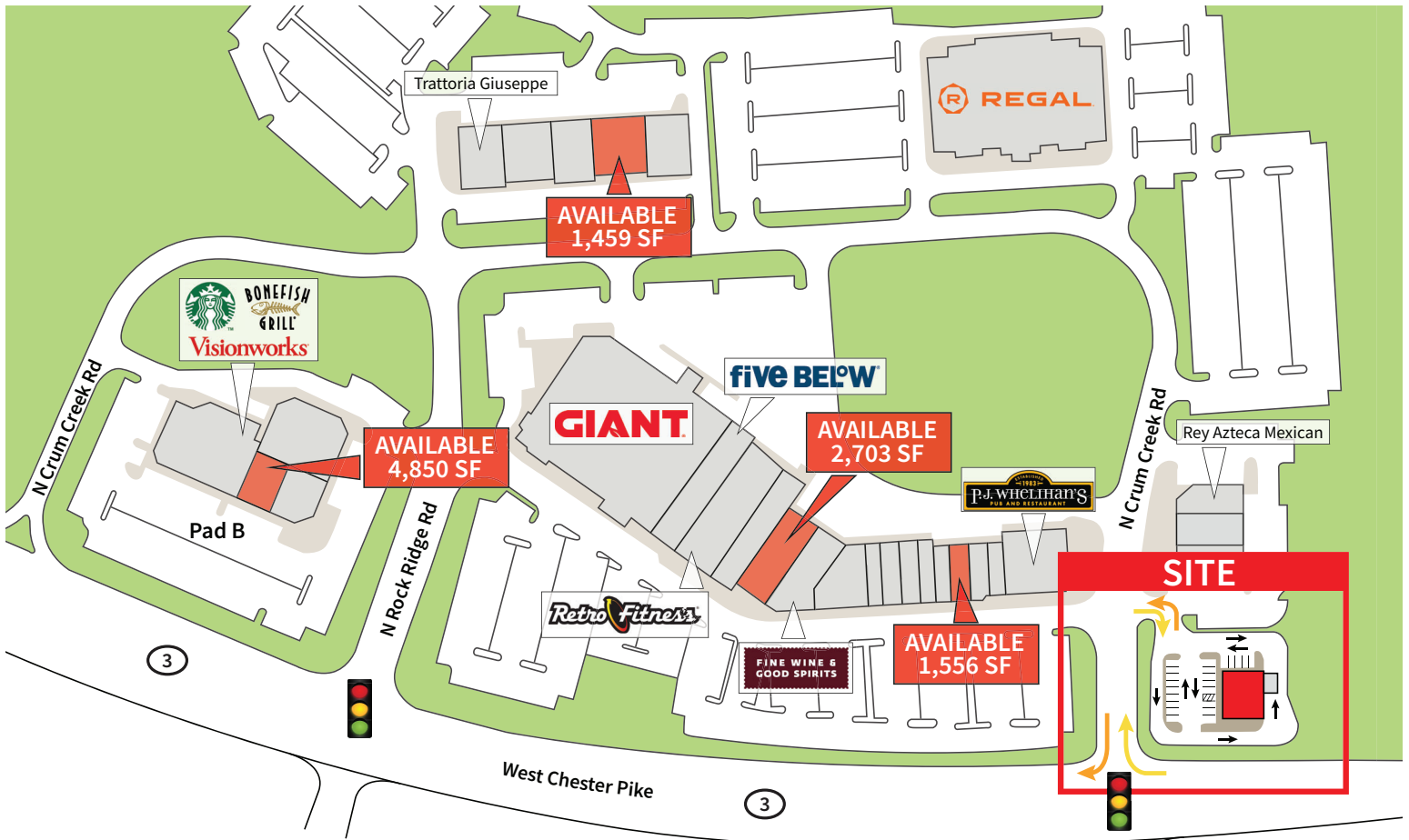
Equity Retail Brokers | 531 W. Germantown Pike, Ste 103 | Plymouth Meeting, PA 19462 | T: 610.645.7700 | www.equityretailbrokers.com

The right space. The right move.

**FREESTANDING BUILDING; 3,000 SF**

4733 West Chester Pike  
 Newtown Square, Delaware County, PA 19073

EQUITY RETAIL BROKERS



Demographics	1 Mile	3 Miles	5 Miles
Population	1,889	21,452	96,450
Average HHI	\$201,330	\$188,996	\$167,595
Adj Daytime Demos (16yrs+)	2,225	21,501	85,213

*Demographic Data Source: Applied Geographic Solutions, 2019 (REGIS)*



Information concerning this offering is from sources deemed reliable but no warranty is made to the accuracy thereof and it is submitted subject to errors, omissions, changes of price or other conditions, prior to sale or lease or withdrawal without notice. Equity Retail Brokers is licensed in PA, NJ, & DE. David Goodman is a licensed salesperson in PA & NJ.

07/20

**NEWTOWN SQUARE MARKET AERIAL**  
4733 West Chester Pike | Delaware County, PA



**SITE**

West Chester Pike 26,284 ADT

Edgmont Square SC

Aerial Source: Google Earth Pro & Traffic Count Source: PA DOT ('19)

**Compliments of:**

Equity Retail Brokers ■ 531 W. Germantown Pike, Ste 103 ■ Plymouth Meeting, PA 19462 ■ 610.645.7700 ■ [www.equityretailbrokers.com](http://www.equityretailbrokers.com)

