

RALPH'S CORNER SHOPPING CENTER

Junior Anchor, Inline, & Endcap Spaces Available

2333 Welsh Rd, Lansdale, Montgomery County, PA19446

EQUITY RETAIL BROKERS



PROPERTY FEATURES & DETAILS

- Junior Anchor: 11,675 SF
- Inline/Endcap: 2,500 SF – 8,965 SF
- Pad: 1.14 AC
- GLA: 236,175 SF



LOCATION DETAILS

- Join Kohl's, Aldi, Ross, Fine Wine & Good Spirits, Applebee's, CVS and more!
- Busy corner location with three access points
- Strong traffic count and household incomes
- Weekday and weekend customer base

CONTACT

DAVID GOODMAN

dgoodman@equityretailbrokers.com

DIRECT 484.417.2219

KEITH SEYMOUR

kseymour@equityretailbrokers.com

DIRECT 484.417.2249

RALPH'S CORNER SHOPPING CENTER**Junior Anchor, Inline, & Endcap Spaces Available****2333 Welsh Rd, Lansdale, Montgomery County, PA19446**

EQUITY RETAIL BROKERS



UNIT	TENANT
A1	All-American Beverage
A2-3	Fine Wine & Good Spirits
A4	Aldi
A5	AVAILABLE: 3,974 SF
A6-7	AVAILABLE: 7,701 SF
B2a	NEGOTIATING LOI
B2b	NEGOTIATING LOI
B3	Hot Nails
B4	Lansdale Lash Lounge
B5	Ralph's Corner Cleaners
C2	ReMax

UNIT	TENANT
C3	InBalance Wellness Spa
C4	GameStop
C5	AT LEASE
C6a	The UPS Store
C6b	Urban L Hair Salon
C7-8	The Little Gym
C9	AVAILABLE JUNE 1: 2,500 SF
C10-13	AVAILABLE: 6,300 SF
C14	Parker's Barber Shop
C15	Ralph's Corner Diner
C16-17	Famous Footwear

UNIT	TENANT
C18	Edible Arrangements
C19	Yantze Chinese Rest.
C20-21	Ross Dress For Less
D1	Kohl's
PAD E	CVS
PAD F	Citadel Federal Credit Union
PAD G	McDonald's
PAD H	Applebee's
PAD I	AT LEASE 1.14 ACRES

Demographics

	1 Mile	3 Miles	5 Miles
Population	6,689	68,762	150,141
Average HHI	\$117,191	\$105,404	\$120,492
Adj Daytime Demos (16yrs+)	10,084	59,761	117,616

Demographic Data Source: Applied Geographic Solutions, 2022 (REGIS)

The right space. The right move.

Information concerning this offering is from sources deemed reliable but no warranty is made to the accuracy thereof and it is submitted subject to errors, omissions, changes of price or other conditions, prior to sale or lease or withdrawal without notice. Equity Retail Brokers is licensed in PA, NJ, & DE. David Goodman is a licensed salespersons in PA & NJ. Keith Seymour is a licensed salespersons in PA, NJ & DE.

03/24

RALPH'S CORNER SHOPPING CENTER

Junior Anchor, Inline, & Endcap Spaces Available

2333 Welsh Rd, Lansdale, Montgomery County, PA19446

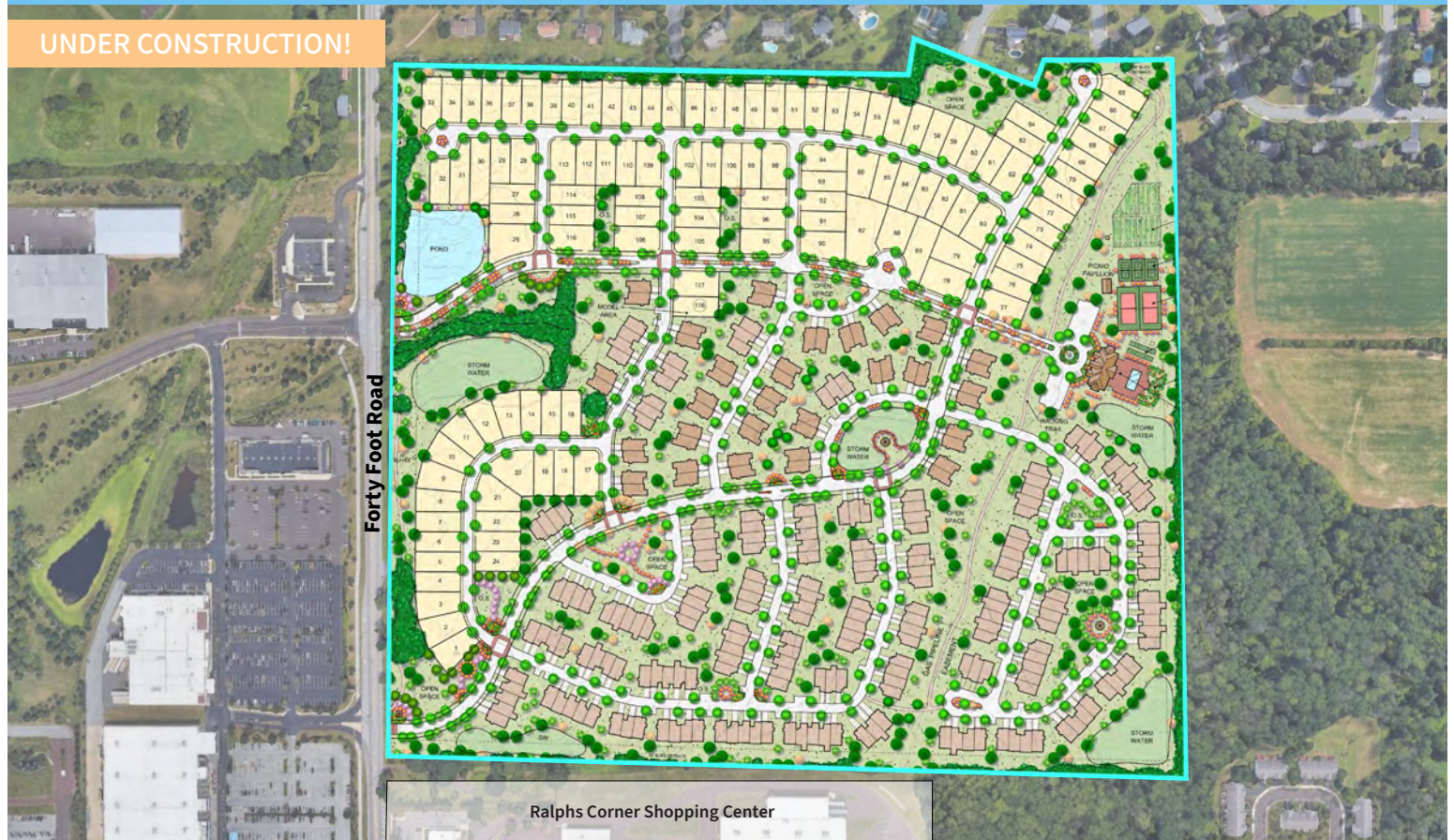
EQUITY RETAIL BROKERS

Vacant 6,300 SF Space



375 single, twin and townhouses proposed on 96 acres adjacent to Ralph's Corner Shopping Center

UNDER CONSTRUCTION!



Ralphs Corner Shopping Center

RALPH'S CORNER SC: INLINE, ENDCAP & JUNIOR ANCHOR FOR LEASE

2333 Welsh Road | Lansdale, Montgomery County, PA



Aerial Source: Google Earth Pro & Traffic Count Source: PA DOT ('17, '18, '19)

Compliments of:

Equity Retail Brokers ■ 531 W. Germantown Pike, Ste 103 ■ Plymouth Meeting, PA 19462 ■ 610.645.7700 ■ www.equityretailbrokers.com

