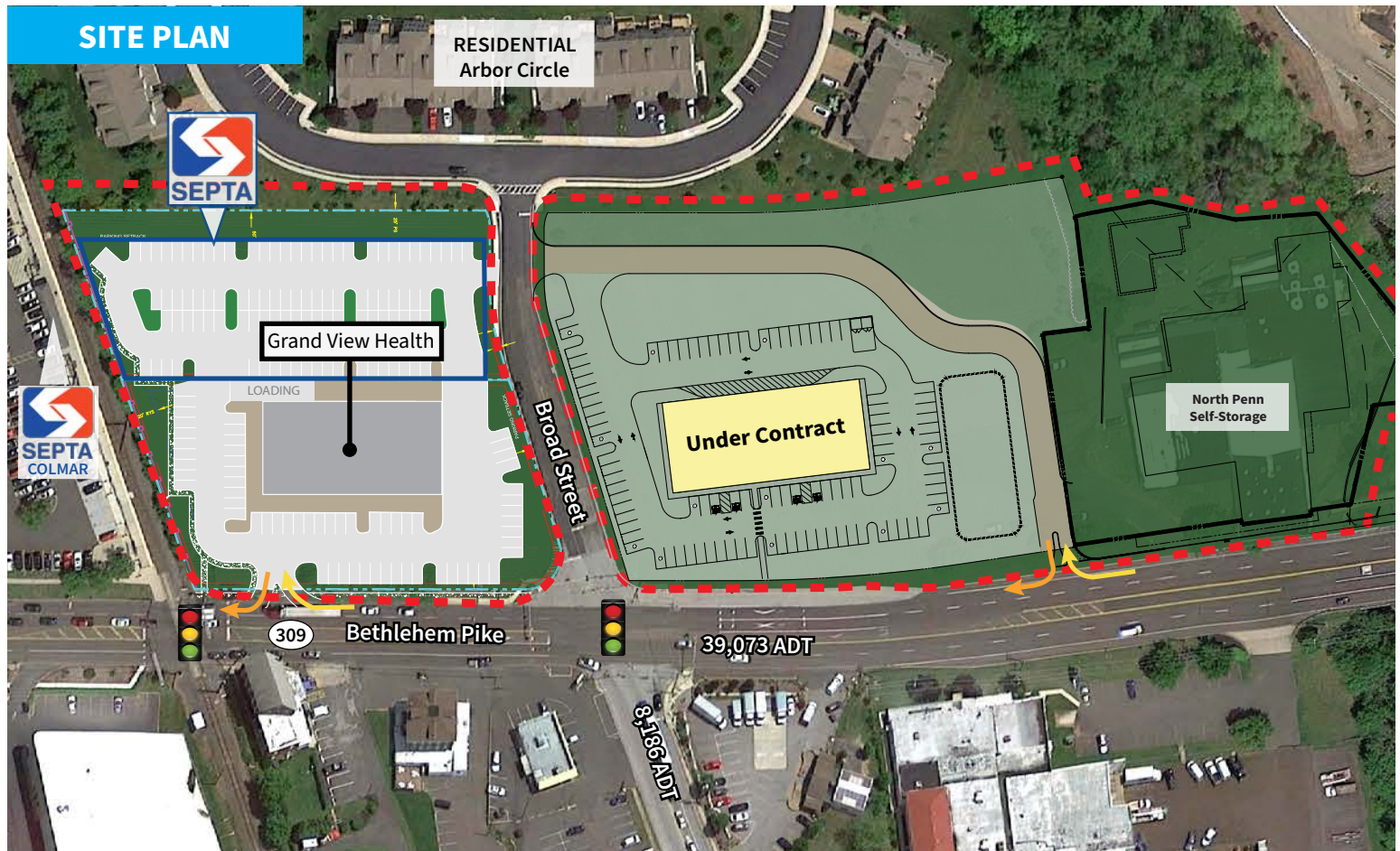


## HATFIELD STATION

Route 309 & Broad Street  
Colmar/Hatfield Twp, Montgomery County, PA 18915

EQUITY RETAIL BROKERS

### SITE PLAN



### PROPERTY DETAILS

- Join Grand View Health at the Colmar SEPTA Station
- Full access at a signalized intersection
- Entire 2.2 acre parcel can also be purchased or leased
- High visibility & traffic counts
- 1.5 miles north of Five Points intersection in Montgomeryville
- Situated in densely populated Hatfield, Lansdale & Montgomeryville market

### CONTACT

David Goodman

dgoodman@equityretailbrokers.com

DIRECT 484.417.2219

Equity Retail Brokers | 531 W. Germantown Pike, Ste 103 | Plymouth Meeting, PA 19462 | T: 610.645.7700 | [www.equityretailbrokers.com](http://www.equityretailbrokers.com)

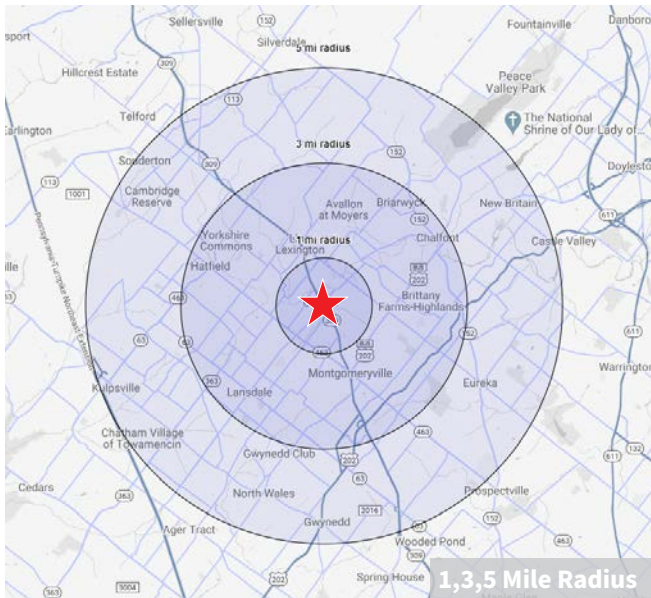
**The right space. The right move.**

# HATFIELD STATION

Route 309 & Broad Street  
Colmar/Hatfield Twp, Montgomery County, PA 18915

EQUITY RETAIL BROKERS

## GRAND VIEW HEALTH BUILDING



### Demographics

	1 Mile	3 Miles	5 Miles
Population	5,386	68,574	140,353
Average HHI	\$122,285	\$109,305	\$121,350
Adj Daytime Demos (16yrs+)	7,063	53,453	109,345

Demographic Data Source: Applied Geographic Solutions, 2019 (REGIS)



RETAILBROKERS  
NETWORK

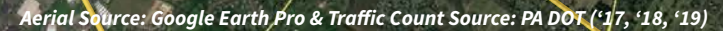


CMRE CAPITAL MARKETS  
REAL ESTATE NETWORK

Information concerning this offering is from sources deemed reliable but no warranty is made to the accuracy thereof and it is submitted subject to errors, omissions, changes of price or other conditions, prior to sale or lease or withdrawal without notice. Equity Retail Brokers is licensed in PA, NJ, & DE. David Goodman is a licensed salesperson in PA & NJ.



## Route 309 & Broad St | Philadelphia County, PA



10/21

EQUITY RETAIL BROKERS