

# PRESENTED FOR LEASE BY EQUITY RETAIL BROKERS

## 10,900 SF AVAILABLE IN THE HEART OF THE BOROUGH OF DOYLESTOWN!

Freestanding Building with Private Parking Lot  
57 W Court Street | Doylestown, Bucks County, PA 18901

EQUITY RETAIL BROKERS



### PROPERTY FEATURES

- Street level:  $\pm 5,300$  SF
  - Street level ceiling:  $\pm 18'$  -  $16'$  to steel
- Ground level:  $\pm 5,600$  SF
- GLA:  $\pm 10,900$  SF
- Land:  $\pm 33,000$  SF
- Freestanding
- 50+ private parking spaces
- Future drive-thru potential

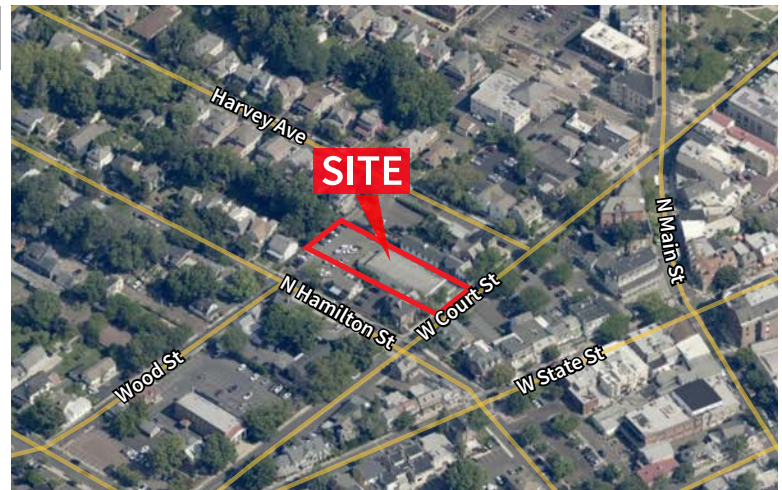
### CONTACT

Ken McEvoy

kmcevoy@equityretailbrokers.com

DIRECT 484.417.2226

Equity Retail Brokers | 531 W. Germantown Pike, Ste 103 | Plymouth Meeting, PA 19462 | T: 610.645.7700 | www.equityretailbrokers.com



The right space. The right move.

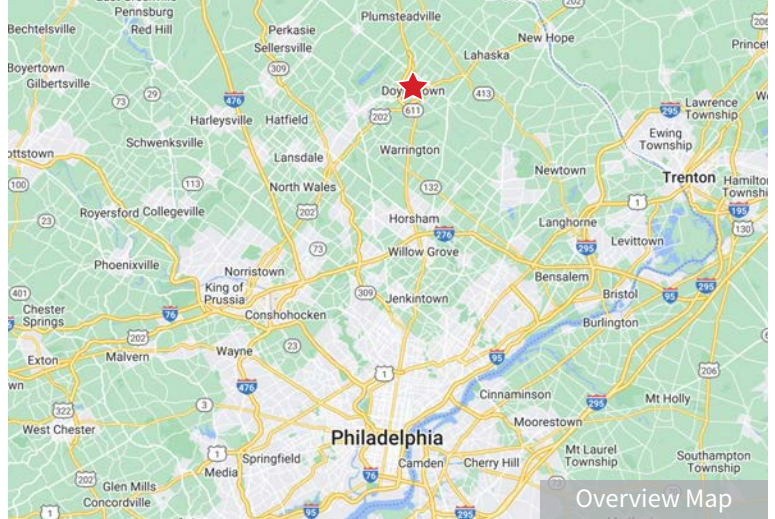
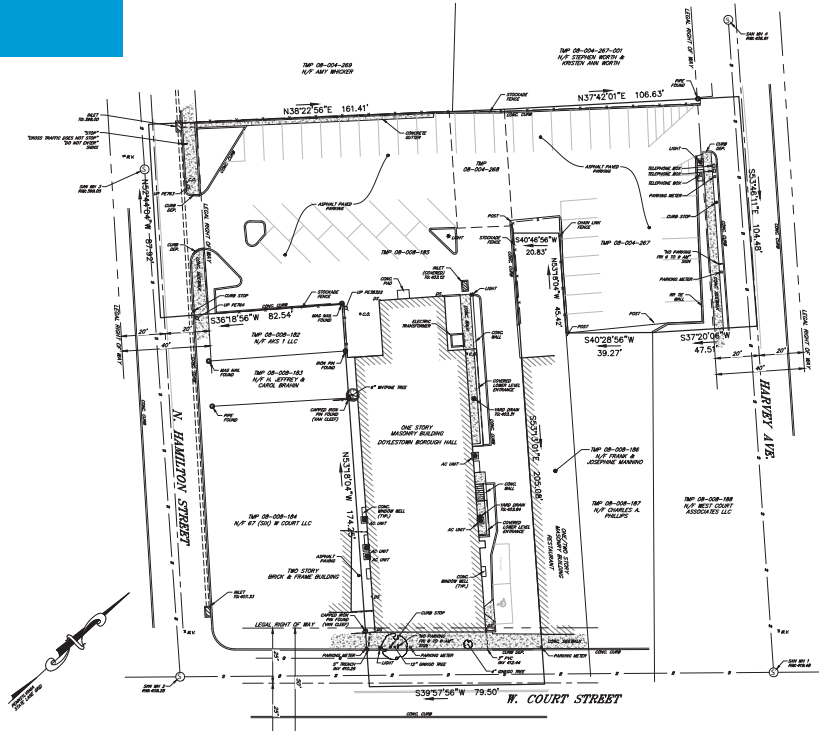


# 10,900 SF AVAILABLE IN THE HEART OF THE BOROUGH OF DOYLESTOWN!

Freestanding Building with Private Parking Lot  
57 W Court Street | Doylestown, Bucks County, PA 18901

EQUITY RETAIL BROKERS

## SITE PLAN



### Demographics

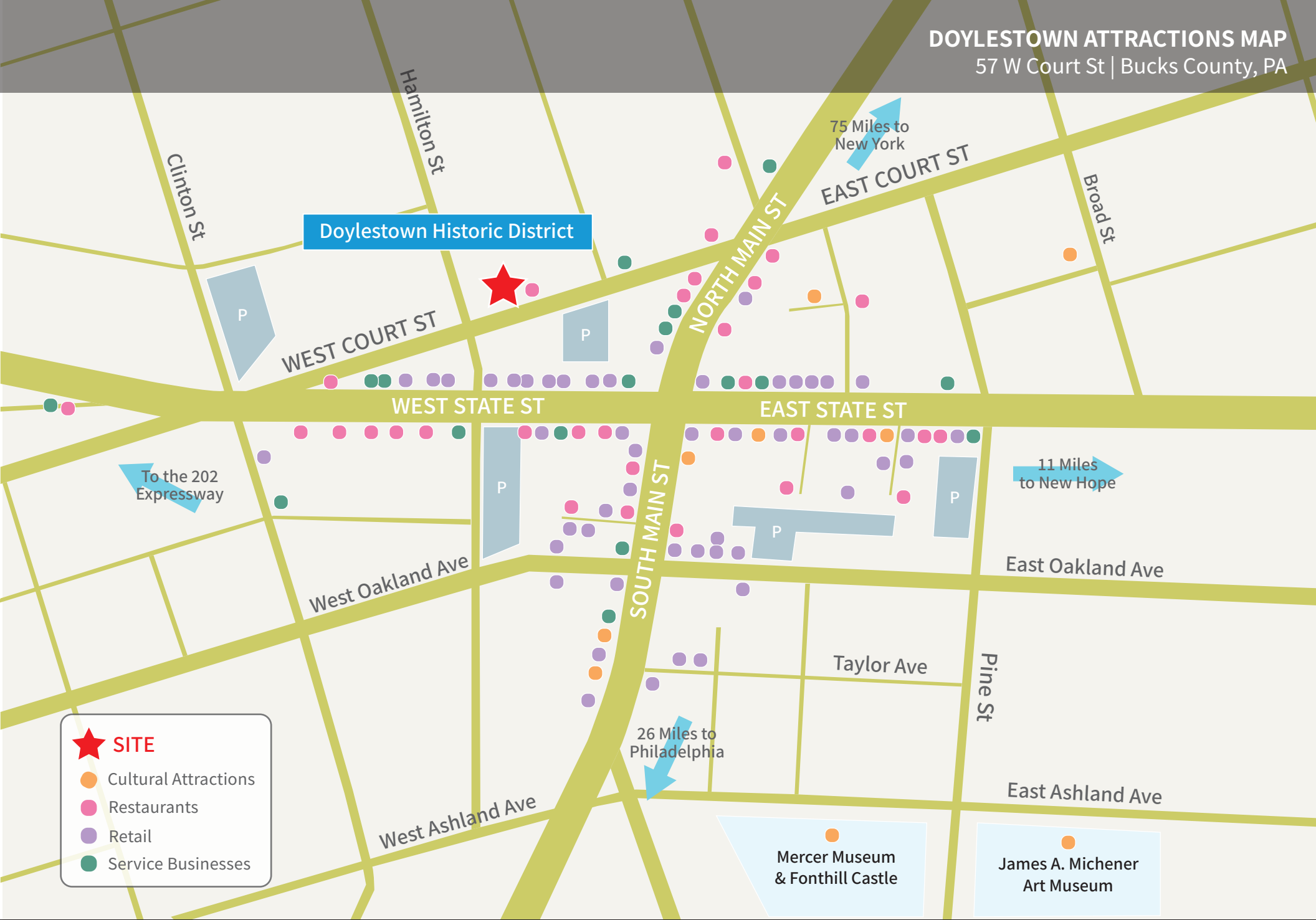
	1 Mile	3 Miles	5 Miles
Population	6,566	74,671	210,693
Average HHI	\$125,952	\$105,229	\$113,646
Adj Daytime Demos (16 yrs+)	4,589	61,707	184,571

Demographic Data Source: Applied Geographic Solutions, 2020 (REGIS)



Information concerning this offering is from sources deemed reliable but no warranty is made to the accuracy thereof and it is submitted subject to errors, omissions, changes of price or other conditions, prior to sale or lease or withdrawal without notice. Equity Retail Brokers is licensed in PA, NJ, & DE. Ken McEvoy is a licensed salesperson in PA & NJ.

**DOYLESTOWN ATTRACTIONS MAP**  
57 W Court St | Bucks County, PA



- SITE**
- Cultural Attractions
- Restaurants
- Retail
- Service Businesses

**Compliments of:**

Equity Retail Brokers ■ 531 W. Germantown Pike, Ste 103 ■ Plymouth Meeting, PA 19462 ■ 610.645.7700 ■ [www.equityretailbrokers.com](http://www.equityretailbrokers.com)





**DOYLESTOWN RETAIL MARKET**  
57 W Court St | Bucks County, PA

EQUITY RETAIL BROKERS

**Cross Keys Place**

**GIANT** SALADWORKS **PAPA JOHN'S**

**Perkins** **Ritas** **five BEL'W**

**FIVE GUYS** **edible** **JERSEY MESS**

**TruMark Financial** **SHERWIN-WILLIAMS** **True Value.**

**SUBWAY** **education** **AT&T**

**CVS pharmacy**

**Doylestown SC**

**ACME** **PNC** **RITE AID** **Starbucks**

**FAMOUS footwear** **Wendy's** **GNC**

**Staples** **PET SUPPLIES PLUS** **Hallmark**

**TURNING POINT** **Great Clips** **HER BLOCK**

**Town Center of New Britain**

**GIANT** **DOLLAR TREE**

**RITE AID** **KUMON** **PHILIP CRUZELI FACTORY**

**AutoZone**

**Mercer Square**

**weis** **Panera BREAD** **ATI**

**ups** **verizon** **BURGER KING** **BANK OF AMERICA**

**Customers Bank** **PEARLE OOVISION**

**T Mobile** **SportClips**



Doylestown Health  
Doylestown Hospital

LifeWorks

the Y

Wawa

CVS pharmacy

KeyBank

THE GODDARD SCHOOL  
FOR FAMILY CHILDHOOD DEVELOPMENT

CHIPOTLE

McDonald's

CHASE

Huntington  
LEARNING CENTER

Wawa

EQUITY RETAIL BROKERS



Aerial Source: Google Earth Pro & Traffic Count Source: PA DOT ('19)

Compliments of:

Equity Retail Brokers ■ 531 W. Germantown Pike, Ste 103 ■ Plymouth Meeting, PA 19462 ■ 610.645.7700 ■ www.equityretailbrokers.com

